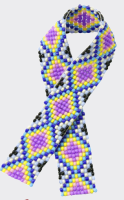
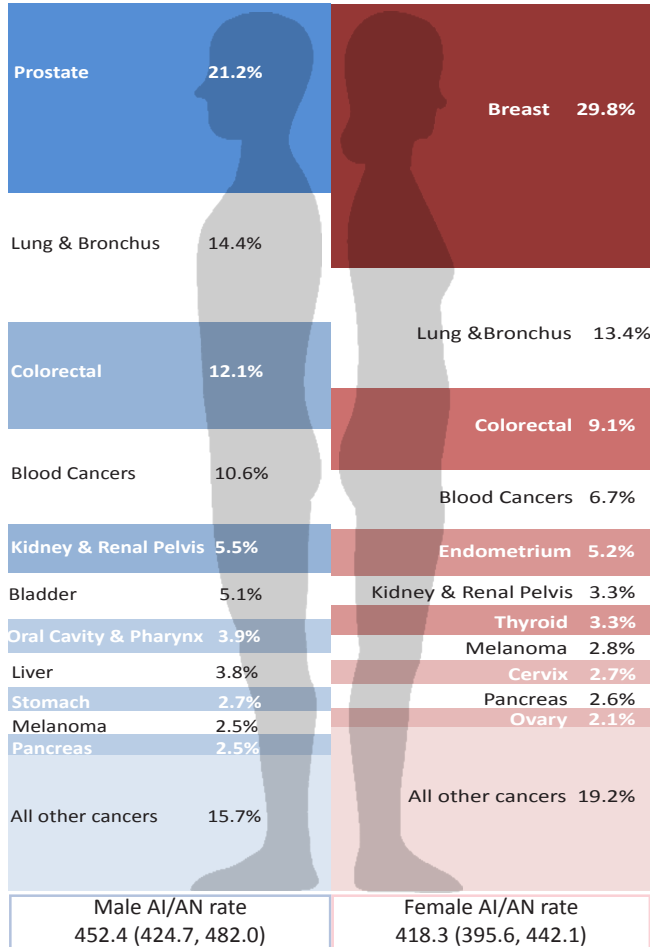


Cancer Among American Indians and Alaska Natives Idaho, Oregon, and Washington, 2003-2007



Northwest Portland Area Indian Health Board
Indian Leadership for Indian Health

Leading cancer sites by sex



Leading cancer sites by age group and sex (percent of cases)

Rank	0-19		20-39		40-64		65+	
	Male	Female	Male	Female	Male	Female	Male	Female
1	Blood cancers (35.0%)	Brain (25.0%)	Blood cancers (22.4%)	Breast (21.1%)	Prostate (18.0%)	Breast (39.1%)	Prostate (27.5%)	Breast (21.2%)
2	Brain (20.0%)	Blood cancers; Kidney (14.3% ea.)	Testis (13.2%)	Thyroid (17.3%)	Colorectal; Lung & bronchus (11.8% ea.)	Lung & bronchus (9.8%)	Lung & bronchus (18.9%)	Lung & bronchus (21.0%)
3	--	--	Kidney (9.2%)	Cervix (11.3%)	Blood cancers (11.3%)	Colorectal (8.8%)	Colorectal (13.5%)	Colorectal (10.9%)

AI/AN = American Indian/Alaska Native
NHW = non-Hispanic White

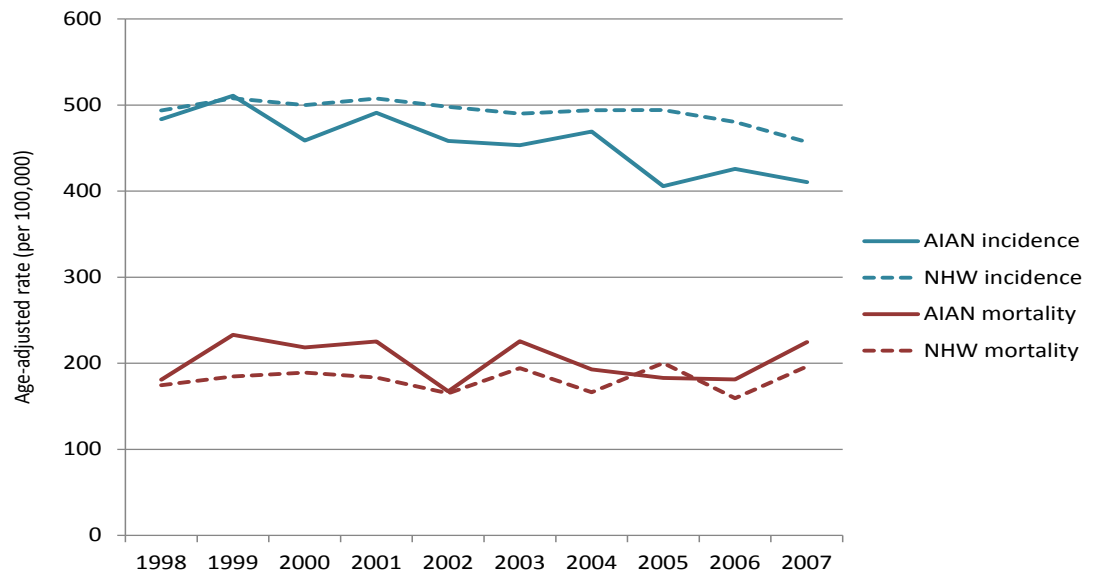
Incidence, selected cancer sites per 100,000 population, calculated using invasive cases only

Cancer	n	Rate (95% CI)	NHW Rate (95% CI)
All Sites	2743	430.7 (413.2, 448.8)	482.7 (480.7, 484.6)
Prostate (male)	280	105.6 (92.2, 120.8)	154.1 (152.6, 155.7)
Breast (female)	399	104.4 (93.8, 116.1)	130.3 (129.0, 131.7)
Lung & Bronchus	403	72.3 (64.9, 80.4)	66.9 (66.2, 67.7)
Colorectal	294	48.9 (43.0, 55.5)	44.1 (43.5, 44.7)
Blood Cancers	246	37.2 (32.2, 42.8)	42.5 (41.9, 43.1)

Racial Misclassification

Cancer estimates for AI/AN may be obscured when AI/AN are incorrectly classified as another race (usually White) in public data sources. Each year the NW Tribal Registry partners with the three Northwest state cancer registries to correct AI/AN racial misclassification and improve cancer estimates for Northwest AI/AN. Please contact us if you are interested in additional cancer data for your community.

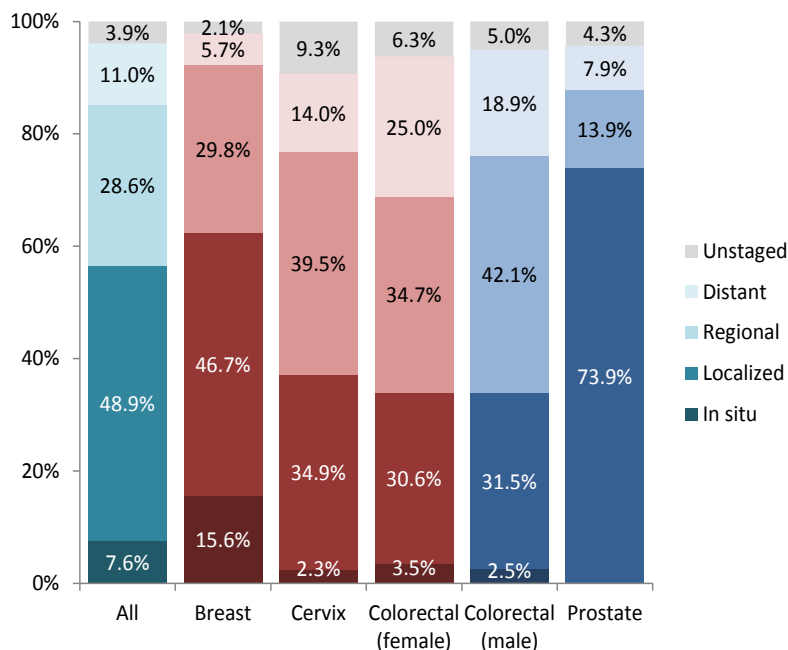
Incidence and mortality 10 year trends, AI/AN and NHW



Cancer screening measures: Portland Area IHS (Idaho, Oregon, & Washington, 2010 reporting year)

56% of women ages 21-64 had a pap smear in the past 3 years	All IHS: 59% 2010 Goal: 90%
38% of women ages 52-64 had a mammogram in the past 2 years	All IHS: 48% 2010 Goal: 70%
38% of patients ages 51-80 had colorectal cancer screening in the past year	All IHS: 37% 2010 Goal: 50%
27% of tobacco users received tobacco cessation counseling in the past year	All IHS: 25% 2010 Goal: not determined

Stage at diagnosis, screen-detectable cancers



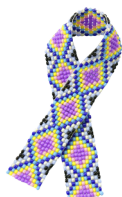
Note: *In situ* and localized may be referred to as 'early stage'; regional and distant are often considered 'late stage'

Data Notes

- Unless specified as non-Hispanic White (NHW), all data are for American Indian or Alaska Native (AI/AN alone or in combination with another race) residents of Idaho, Oregon, or Washington, diagnosed from 2003-2007
- Unless specified, counts (n) and proportions (%) include all reportable cancer sites and stages
- Rates are interpreted as the number of cases (or deaths) that would occur in a population of 100,000 people over one year. All rates are age-adjusted to the 2000 US standard population.
- Incidence rates include invasive cancers plus *in situ* urinary bladder.
- Mortality rates are incidence-based and include a death from any type of cancer. These are based on cancers diagnosed from 1992-2007, and do not represent complete mortality.
- Blood cancers include leukemia, Hodgkin lymphoma, non-Hodgkin lymphoma, and multiple myeloma
- Data are from Cancer Data Registry of Idaho, Oregon State Cancer Registry, and Washington State Cancer Registry; compiled by Northwest Tribal Registry Project and Northwest Tribal Cancer Control Project, NPaiHB

For more information:

Megan Hoopes, MPH
503-416-3261 or mhoopes@npaihb.org



Cancer mortality, selected sites per 100,000 population

Cancer	n	Rate (95% CI)	NHW Rate (95% CI)
All Sites	1158	201.5 (189.1, 214.7)	183.3 (182.1, 184.5)
Lung & Bronchus	301	55.4 (48.9, 62.6)	54.0 (53.4, 54.7)
Breast (female)	77	23.8 (18.5, 30.4)	21.0 (20.5, 21.6)
Prostate (male)	45	22.6 (16.0, 31.6)	19.9 (19.3, 20.5)
Colorectal	123	21.8 (17.8, 26.5)	16.6 (16.2, 16.9)
Blood Cancers	107	17.7 (14.2, 22.0)	18.5 (18.2, 18.9)

Resources

For more information about statistical terms and interpretation, see www.cancer.gov/statistics/glossary
 For more information on stage at diagnosis definitions, see www.cancer.gov/cancertopics/factsheet/detection/staging
 Cancer Data Registry of Idaho: www.idcancer.org
 Oregon State Cancer Registry: www.oregon.gov/DHS/ph/oscar
 Washington State Cancer Registry: <https://fortress.wa.gov/doh/wscr/>
 Screening information from Indian Health Service