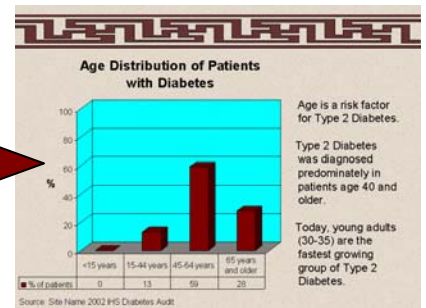
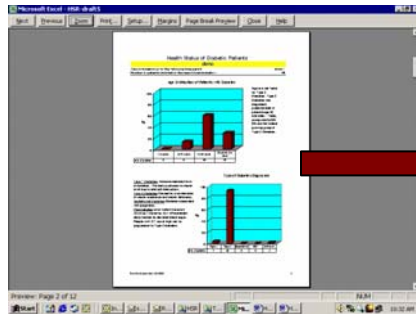


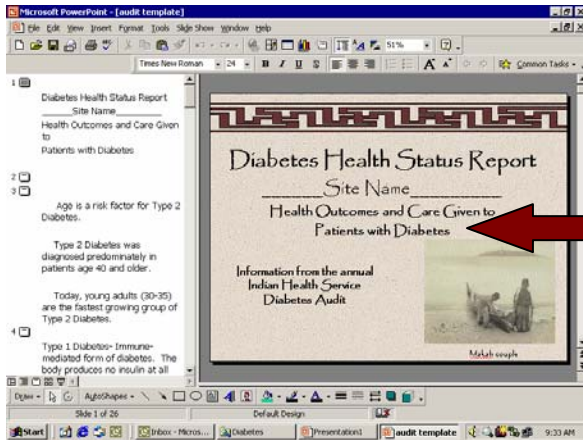
PowerPoint Template Instructions

Health Status Report for Patients with Diabetes

You can create a PowerPoint slide show by using this existing template to insert your own graphs from the Health Status Report. If you have questions on how to do this please call the Western Tribal Diabetes Project at 1-800-862-5497.



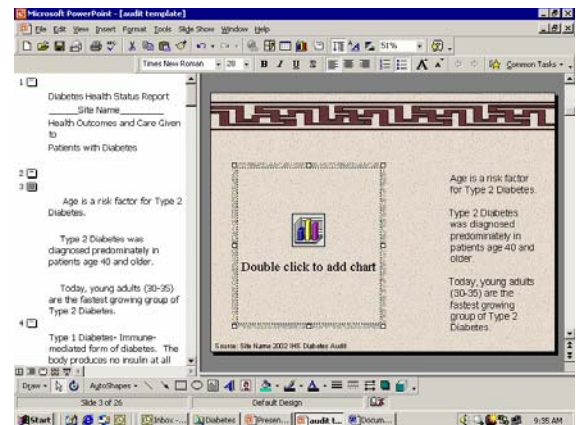
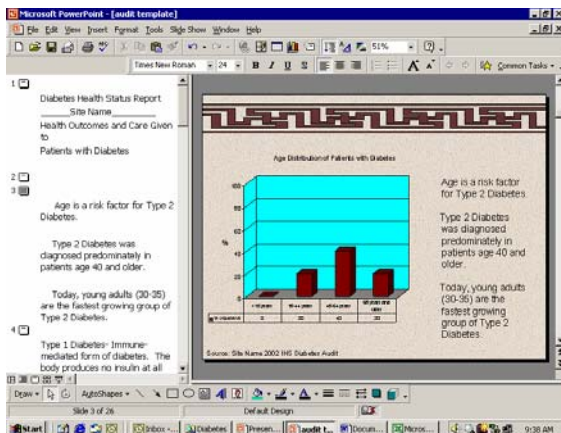
Step One



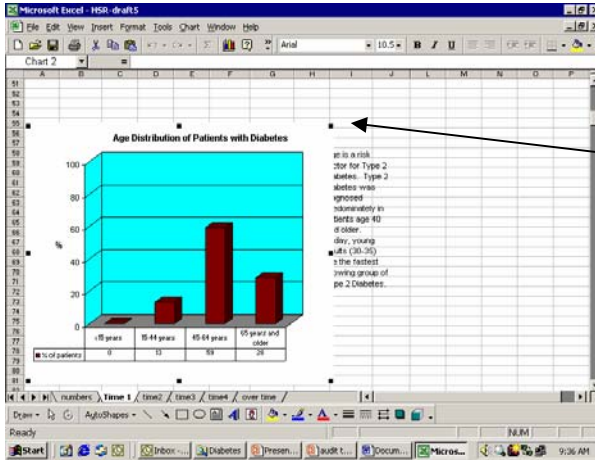
Open the PowerPoint file and update the title slide by typing in your site name in the area for "Site Name". Save a copy on your hard drive or zip disk.

Step Two

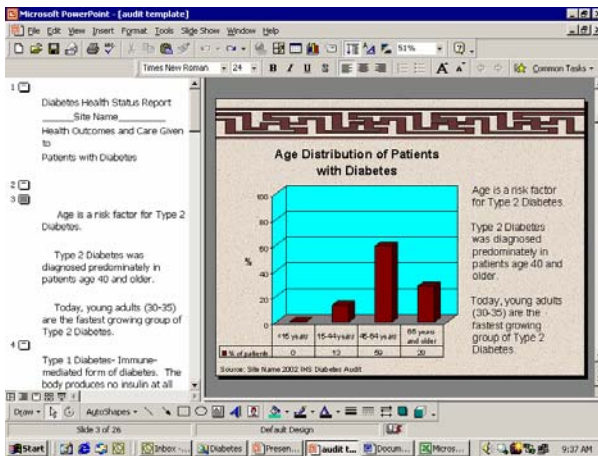
The existing PowerPoint slide show contains demonstration data. It will need to be updated with your information. Here's how you can update the graph to show your clinic data:



1. Click on the graph in the slide
2. Cut the existing graph



- Open your Health Status Report in Excel – (note: this template is for the “one time, two time.....reports. It is not compatible with the “over time” report)
- Go to the graph that pertains to this slide
- Select entire graph (including title). Make sure the four outside corners are selected
- Copy the graph
- Return to the PowerPoint slide that matches the graph



- Paste your graph
- Resize the graph if needed by double clicking on the graph
- Update the source by typing your clinic name in place of “site name”.
- Save your file to your hard drive or disk!

Step Three:

Show to your clinic, health board, patients with diabetes or other audience!

- Print off overheads and handouts or
- View using an LCD projector



Questions? Call the Western Tribal Diabetes Project at 1-800-862-5497.