

# 1. Demographics

14: Population

---

16: Age Distribution

---

18: Educational Attainment

---

20: Economic Indicators

---





Demographics provide information on the age, gender, and geographic distribution of a population. Demographics also include data on social and economic factors that influence people's health, including income levels, educational attainment, and employment status. Demographic information can help health researchers, planners, and healthcare providers understand the communities they serve, and identify factors that might explain health outcomes and disparities experienced by a population.

AI/AN make up about 2.8% of the population in the Northwestern states of Idaho, Oregon, and Washington. AI/AN in the Northwest are noticeably different from the general Northwest population on several demographic indicators<sup>1</sup>, including the following:

- **AI/AN in the Northwest are younger than the general population.** The median age for AI/AN in Idaho, Oregon, and Washington is about seven years younger than the general population in these states.
- **AI/AN have lower levels of educational attainment than the general population.** About 16% of adult AI/AN have not completed a high school degree or equivalent, compared to 10% of the general population.
- **AI/AN have lower income levels and higher poverty rates than the general population.** The median income for AI/AN in the Northwest is \$9,770 lower than the regional average. About 27% of AI/AN in the Northwest live in poverty, compared to 15.5% of the general population.

This section describes key demographic characteristics of AI/AN in Idaho, and includes data on age distribution, geographic distribution, educational attainment, and economic indicators.

1. U.S. Census Bureau. American Community Survey 3-year Estimates, 2010-2012.

# Population

In 2010, a total of 36,385 AI/AN were living in Idaho, which represents about 2.3% of the total state population (Table 1.1). Most of Idaho's AI/AN population were living in counties that overlap with Tribal lands or near the cities of Boise or Twin Falls. This is shown in Figure 1.1, where the darker shading indicates a larger AI/AN population. Ada County, which includes Boise, has the greatest number of AI/AN residents (N=5,884 or 16% of Idaho's total AI/AN population).

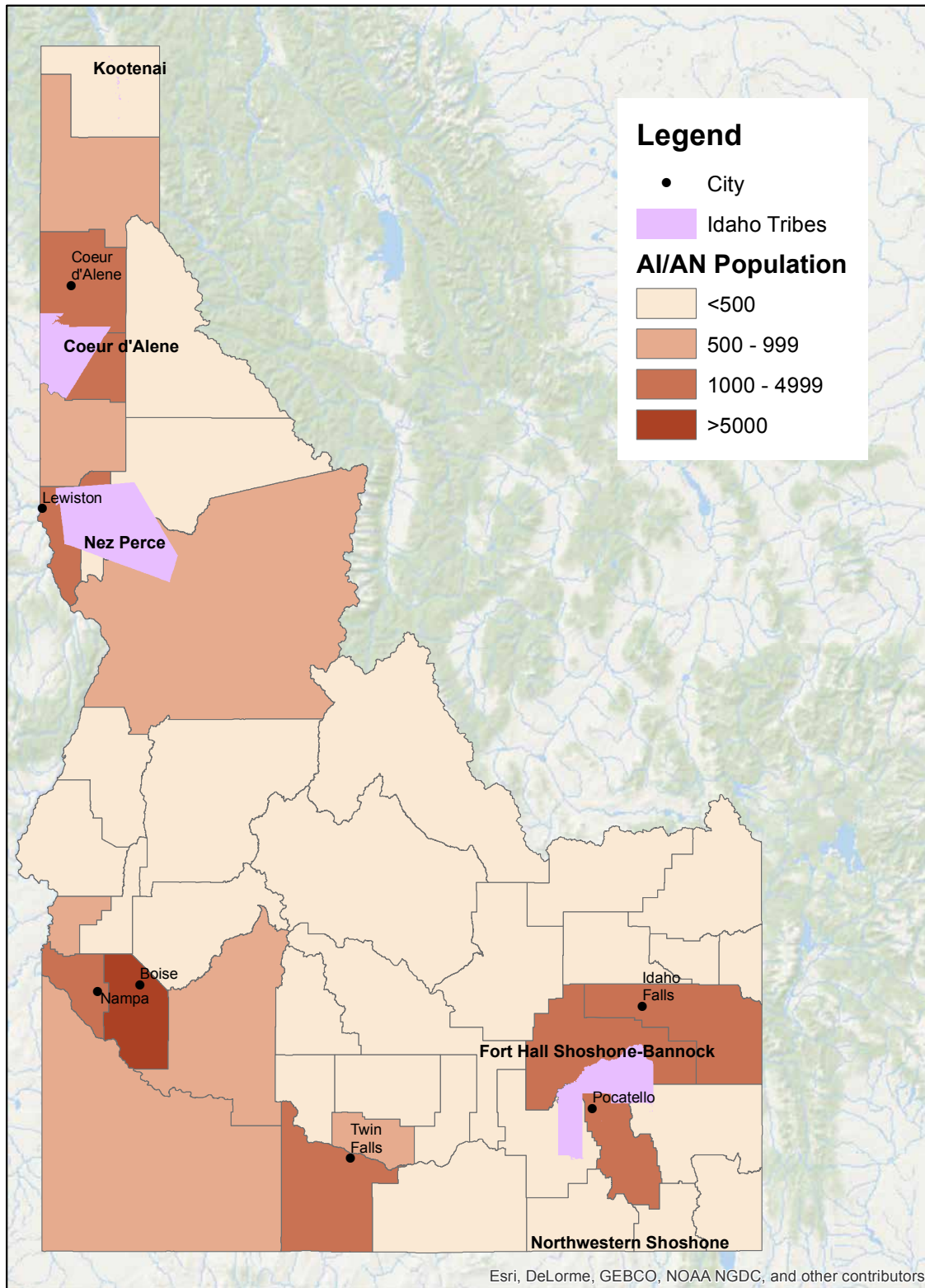
**Table 1.1: Population by race and sex, Idaho, 2010.**

	Male Population N (%)	Female Population N (%)	Total Population N (%)
<b>AI/AN</b>	18,085 (2.3%)	18,300 (2.3%)	36,385 (2.3%)
<b>NHW</b>	656,298 (83.6%)	659,945 (84.4%)	1,316,243 (84.0%)
<b>Other Races</b>	110,941 (14.1%)	104,013 (13.3%)	214,954 (13.7%)
<b>All Races</b>	785,324 (100.0%)	782,258 (100.0%)	1,567,582 (100.0%)

*Data Source: Table 1.1 - 2010 Census Summary File 2 QT-P1 TABLE; Figure 1.1 - 2007-2012 American Community Survey Selected Population Tables*

*Data Notes: For information on confidentiality protection, non-sampling errors, and definitions, see <http://www.census.gov/prod/cen2010/doc/sf2.pdf>. Summary File 2 has a population threshold of 100. Data are available only for the population groups having a population of 100 or more of that specific group within a particular geographic area.*

Figure 1.1: AI/AN population by county, Idaho, 2010.



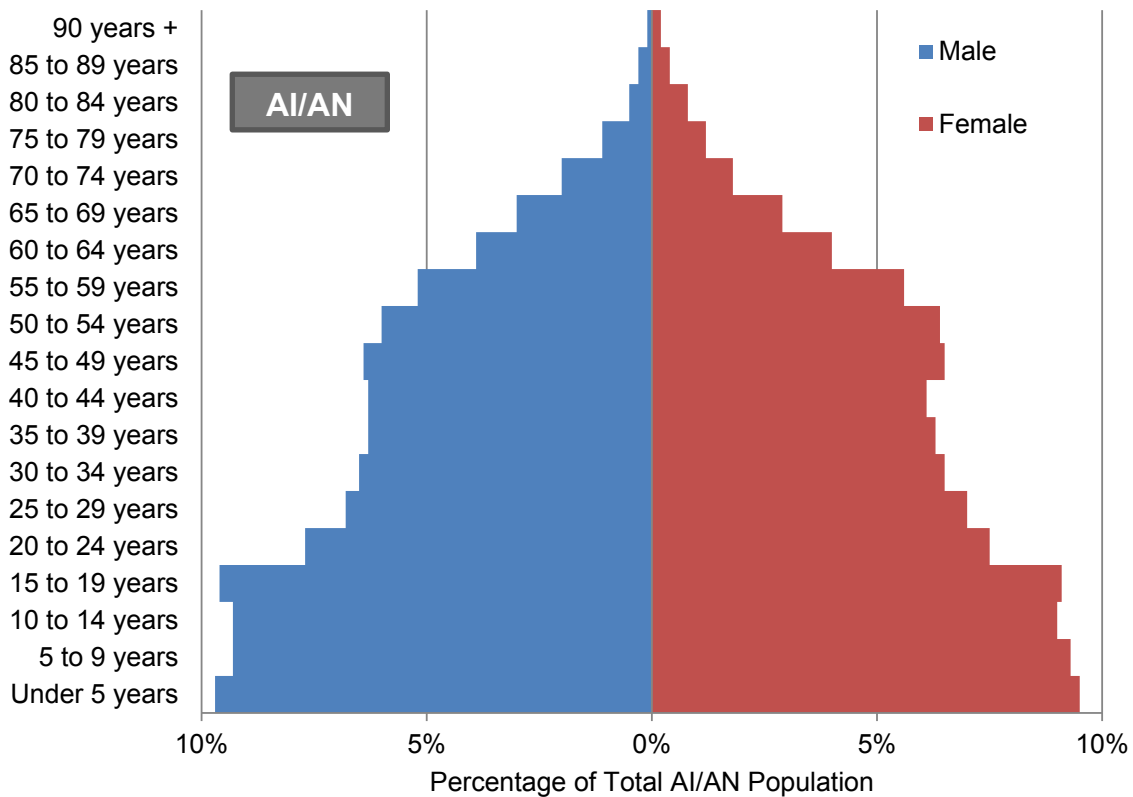
# Age Distribution

AI/AN in Idaho are younger than NHW in the state. In 2010, the median age for AI/AN was 28.6 years, which was 8.7 years younger than the median age for NHW (37.3 years). The age distribution for Idaho AI/AN (Figure 1.2) is noticeably different than the age distribution for NHW in the state (Figure 1.3). A larger proportion of the AI/AN population is in the younger age groups, while a larger proportion of the NHW population is in the older age groups. In both cases, women are achieving advanced age in greater numbers than men.

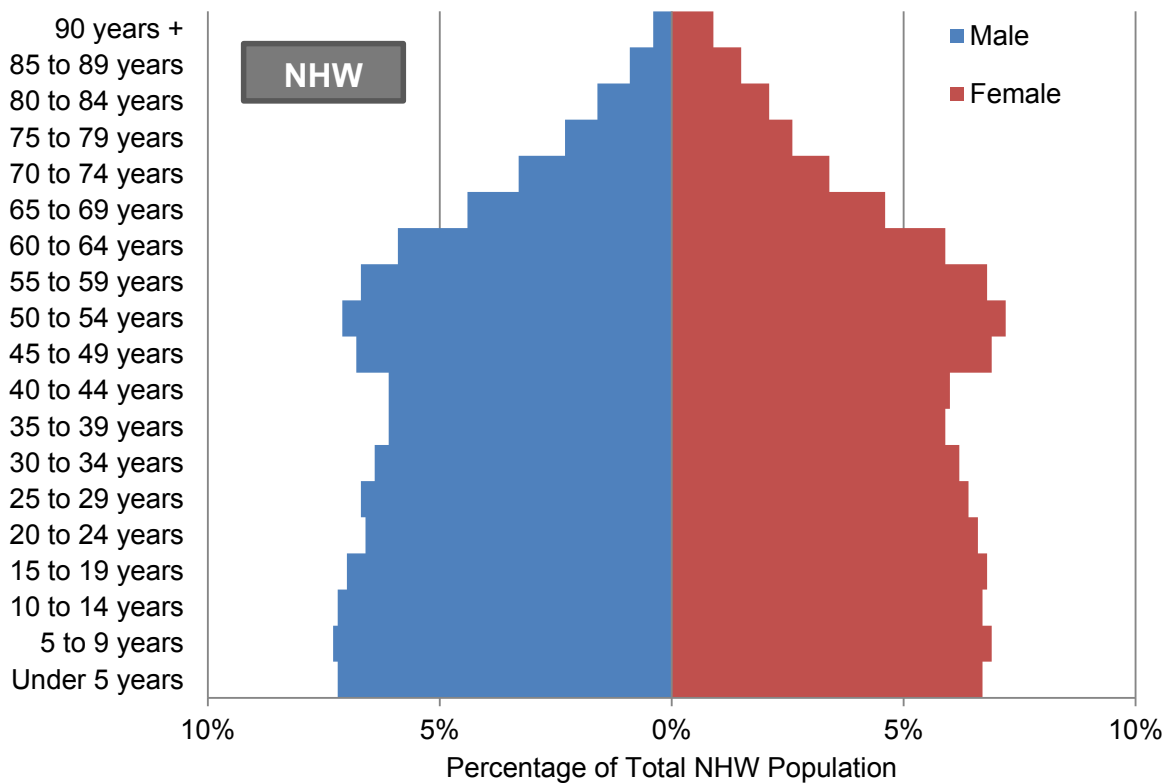
*Data Source: 2010 Census Summary File 2 QT-P1 TABLE*

*Data Notes: For information on confidentiality protection, non-sampling errors, and definitions, see <http://www.census.gov/prod/cen2010/doc/sf2.pdf>. Summary File 2 has a population threshold of 100. Data are available only for the population groups having a population of 100 or more of that specific group within a particular geographic area.*

**Figure 1.2: Age distribution by sex for AI/AN, Idaho, 2010.**



**Figure 1.3: Age distribution by sex for NHW, Idaho, 2010.**



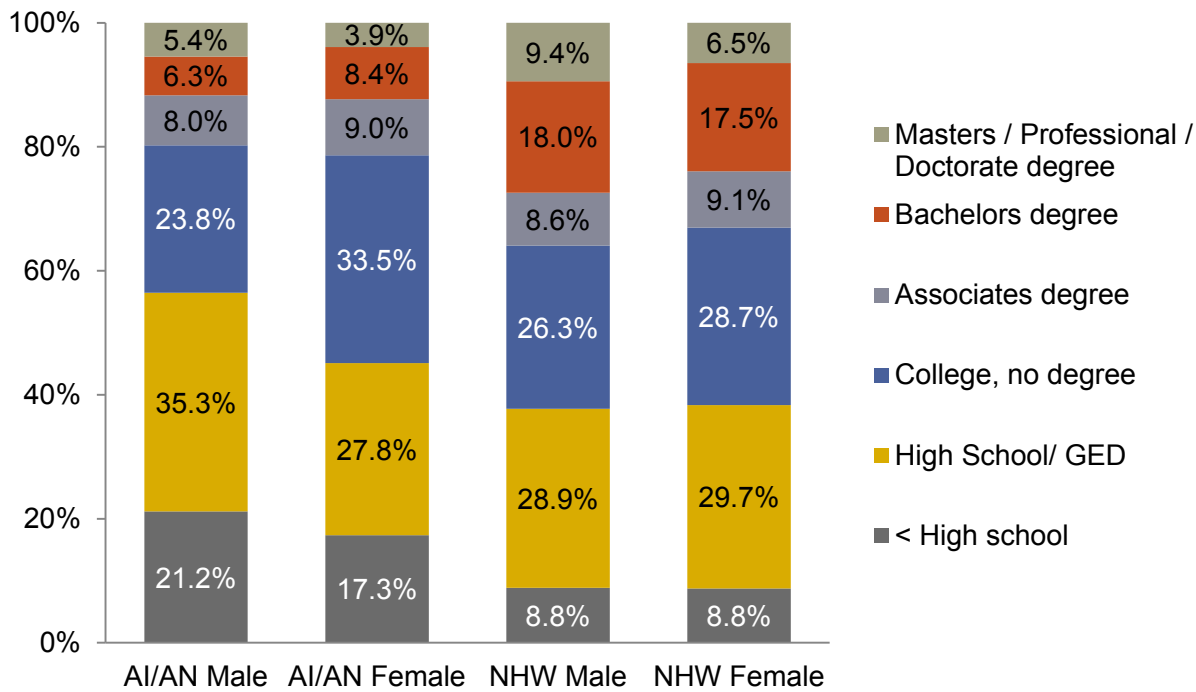
# Educational Attainment

Figure 1.4 compares educational attainment for adult AI/AN and NHW in Idaho. Compared to NHW, fewer AI/AN completed high school. About 28% of AI/AN females went only as far as graduating high school or getting a GED in their education, which was similar to NHW males and females. However, a higher percentage of AI/AN males ended their education with high school (35%). NHW males and females were about the same in their likelihood to complete a Bachelor's degree (18% and 17.5% respectively), while AI/AN were much less likely to go on to complete a Bachelor's degree. Female AI/AN were slightly more likely to attain a bachelor's degree than male AI/AN (8.4% versus 6.3%); however when considering all higher education there was little difference between the genders.

*Data Source: 2006-2010 American Community Survey Selected Population Tables. B15002: SEX BY EDUCATIONAL ATTAINMENT FOR THE POPULATION 25 YEARS AND OVER - Universe: Population 25 years and over*



**Figure 1.4: Educational attainment for adults by race and sex, Idaho, 2006-2010.**



N (25 yrs+): AI/AN males=49,864; AI/AN females=54,752; NHW males=1,674,125; NHW females=1,750,956.

GED = General Educational Development degree.

# Economic Indicators

Table 1.2 shows some key economic indicators for AI/AN and NHW in Idaho. The median income for AI/AN is about \$12,500 lower than that of the NHW population. The percent of AI/AN families in poverty is two and a half times that of NHW; the percent of AI/AN individuals in poverty is approximately twice that of NHW. The percentage of unemployed AI/AN is double that of the NHW population and those who receive food stamps is almost triple that of the NHW population.

*Data Source: 2006-2010 American Community Survey Selected Population Tables. B15002: SEX BY EDUCATIONAL ATTAINMENT FOR THE POPULATION 25 YEARS AND OVER - Universe: Population 25 years and over*

**Table 1.2: Economic indicators by race, Idaho, 2006-2010.**

<b>Economic Indicator</b>	<b>AI/AN</b>	<b>NHW</b>
<b>Median Income</b>	\$35,497	\$48,049
<b>Percent of Families in Poverty</b>	22.6%	8.0%
<b>Percent of People in Poverty</b>	25.4%	11.6%
<b>Percent of Children<sup>†</sup> in Poverty</b>	32.5%	13.5%
<b>Percent Unemployed</b>	13.3%	6.4%
<b>Receive Food Stamp Benefits</b>	21.4%	7.1%

<sup>†</sup> Under 18 years of age