



# **Gynecologic Cancer Incidence and Mortality Among American Indian/Alaska Native Women in the Pacific Northwest, 1996-2016**

---

**DATE: February 21, 2020 PRESENTED BY: Mercedes Weisenberger, MD**

# Background

- Scarce data on impact of GYN cancers in AI/AN women
- Most recent data from 1990-2009
- Update incidence and mortality of gynecologic cancers among AI/AN women living in the Pacific Northwest (Washington, Oregon, and Idaho)

# Methods

- Analysis of population-based cancer registry data and death certificates for the years 1996-2016
- Compared to the Non-Hispanic White population
- Rates were calculated per 100,000 population

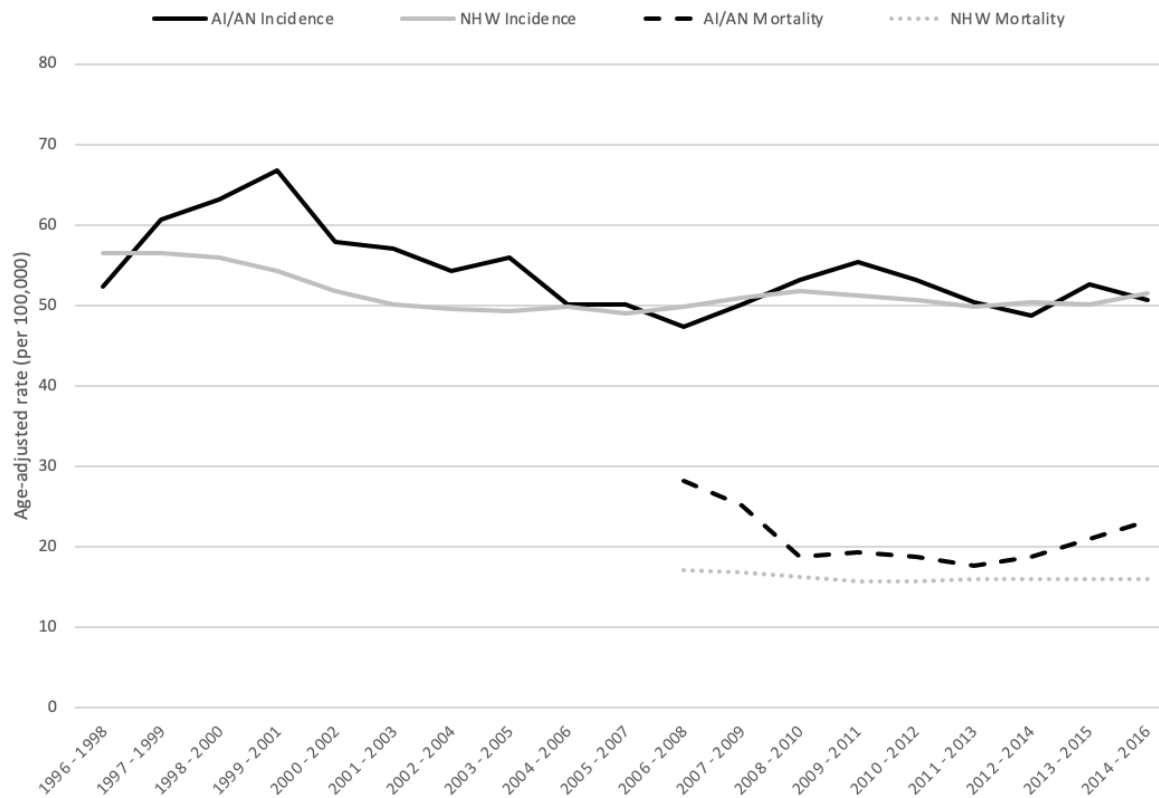
# Characteristics of women diagnosed with gynecologic cancers

- GYN cancers accounted for 12.5% and 11.3% of all cancers among women for AI/AN and NHW in the Pacific Northwest (PNW)

	AI/AN No. (%) 959 (100%)	NHW No. (%) 61,283 (100%)	P-value
Cancer =Uterine	455 (47.4)	31,629 (51.6)	<0.0001
Staging = localized	481 (50.2)	31,274 (51.0)	0.9413
Age @ Dx	50-64 (38.6%)	65+ (44.5%)	<0.0001
Non metropolitan	269 (28.0)	10,916 (17.8)	<0.001

# Trends in GYN Cancer

Figure 1. Trends in gynecologic cancer incidence and mortality rates among AI/AN and NHW, Northwest Region.



Abbreviations: AI/AN = American Indian/Alaska Native; NHW = Non-Hispanic White

# Incidence & Mortality Rates

	AI/AN (rate)	NWH (rate)	Rate Ratio
Rate of Unstaged Cancers	73 (5.0)	4,419 (3.5)	RR: 1.41
Age Adjusted Mortality	198 (21.9)	11,553 (16.1)	RR: 136
Cervical Cancer Incidence	221 (10.5)	7,001 (6.8)	RR: 1.53
Cervical Cancer Mortality	39 (3.2)	1,132 (1.8)	RR: 1.79
Cervical Mortality age 50-64	23 (10.4)	419 (3.6)	RR: 2.88
Uterine Cancer Mortality	56 (5.9)	3,203 (4.4)	RR: 135
Non Metropolitan	29 (12.8)	1,148 (8.5)	RR: 151

# Conclusion

- Gynecologic cancers occur at similar rates among AI/AN women when compared to NHW
- Mortality for gynecologic cancers is greater in the AI/AN population

# Authors

Amanda S. Bruegl, MD<sup>1</sup>; Sujata Joshi, MSPH<sup>2</sup>; Samantha Batman, MD<sup>1</sup>; Mercedes Weisenberger, MD<sup>1</sup>; Elizabeth Munro, MD<sup>1</sup>; Thomas Becker, MD PhD<sup>2,3</sup>

1: Department of Obstetrics and Gynecology, 3181 SW Sam Jackson Park Road, Oregon Health and Science University (OHSU), Portland, OR, 97239, USA

2: Northwest Portland Area Indian Health Board Tribal Epidemiology Center, 2121 SW Broadway, Suite 300, Portland, OR, 97201, USA

3: OHSU-Portland State University (PSU) School of Public Health, 506 SW Mill Street, Portland, OR, 97201, USA