



WA SMOKE & AIR



Presenters

Kennly Asato

Deputy

Emergency Preparedness
and Response

Lauren Freeland

*Environmental and Spatial
Epidemiologist*

Environmental Epidemiology
& Toxicology

The Basics

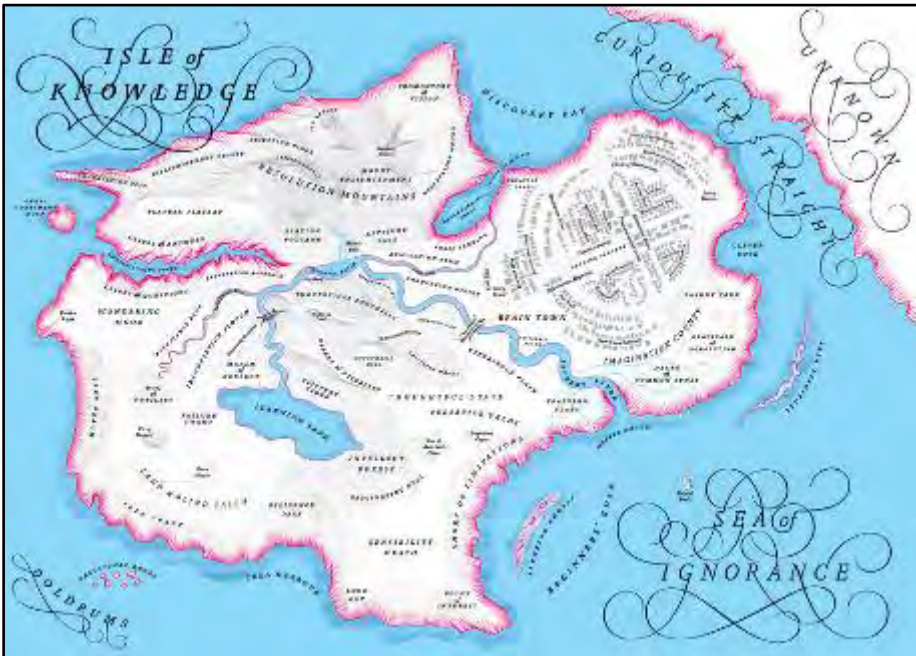
Okay, we are going with the info we have. Good luck, everyone.



Is this right?!

WTH?!

The Struggle is Real



- Struggle of finding useful visual and maps to aid in planning efforts
- Challenge of having to compare data across maps during a response
- Challenge of sharing maps and visuals with external partners
 - Firewall issues
 - File size limitations

Washington Tracking Network (WTN)

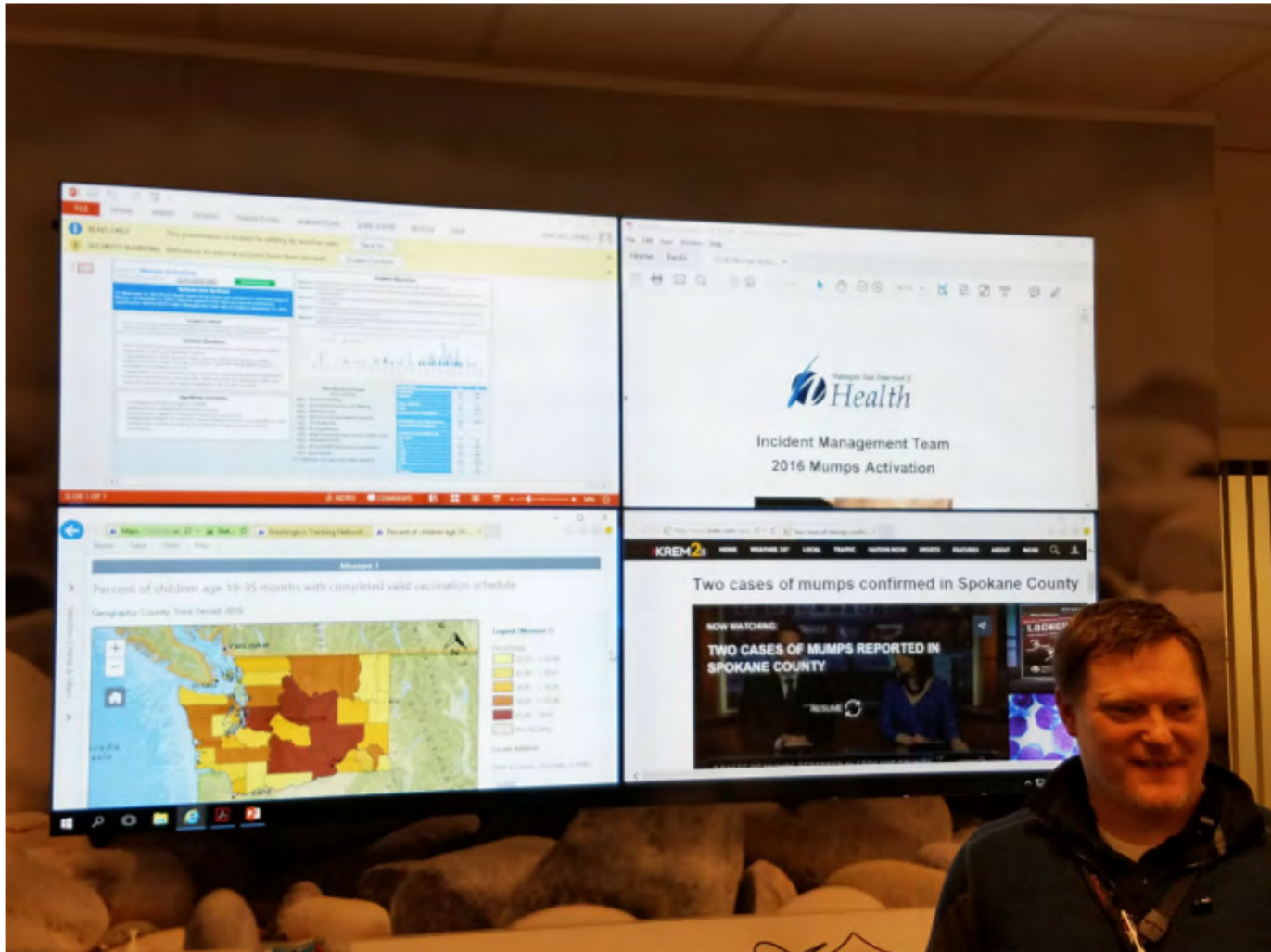
- Public website where people can use data to learn about and address public health concerns
- Originally created for Environmental Public Health data (e.g. Air Quality, Cancer, Asthma, Drinking Water)
- Ability to see trends over time, information by location and overlay data on a map

Benefits of Using WTN

- Data is available to the public
- Data is only updated internally– not anyone can make changes to it
- Ability to view existing data and map layers with our own data



WTN in Action!



BRACE YOURSELVES,

WTTN IS COMING

The Washington Tracking Network (WTN)

WTN.DOH.WA.GOV

Washington Tracking Network
(WTN)

[Air Quality](#)

[Asthma](#)

[Biomonitoring](#)

[Birth Outcomes](#)

[Body Mass Index](#)

[Cancer](#)

[Carbon Monoxide](#)

[Climate Change](#)

[Community Characteristics](#)

[Drinking Water](#)

[Heart Attack](#)

[Heat Stress](#)

[Infectious Diseases](#)

[Information by Location](#) +

[Injury](#)

Washington Tracking Network (WTN)

Welcome to WTN, your source for environmental and public health data.

[Search WTN Data](#)

Sort, export, chart and map data for environmental and public health measures. [Search data](#) now



[Information by Location \(IBL\)](#)

Explore community rankings for topics such as health disparities (differences) and lead exposure risk. View [Information by Location](#) tool now.



[WTN Dashboards](#)

View WTN data in a new way. Like our current tools, these [dashboards](#) have maps, charts and graphs. You can see these features in the same view.



[WTN On The Go](#)

Use your phone or tablet to view our new [tool](#) for environmental health topics, such as radon. Touch the maps to see data for your community.



Learn More

Learn about WTN topics by clicking on the topics to the left. Or, visit our [topic page](#).

Washington Tracking Network (WTN)

[Air Quality](#)

[Asthma](#)

[Biomonitoring](#)

[Birth Outcomes](#)

[Body Mass Index](#)

[Cancer](#)

[Carbon Monoxide](#)

[Climate Change](#)

[Community Characteristics](#)

[Drinking Water](#)

[Heart Attack](#)

[Heat Stress](#)

[Infectious Diseases](#)

[Information by Location](#)

[Injury](#)

Washington Tracking Network (WTN)

Welcome to WTN, your source for environmental and public health data.

[Search WTN Data](#)

Sort, export, chart and map data for environmental and public health measures. [Search data](#) now



[Information by Location \(IBL\)](#)

Explore community rankings for topics such as health disparities (differences) and lead exposure risk. View [Information by Location](#) tool now.



[WTN Dashboards](#)

View WTN data in a new way. Like our current tools, these [dashboards](#) have maps, charts and graphs. You can see these features in the same view.



[WTN On The Go](#)

Use your phone or tablet to view our new [tool](#) for environmental health topics, such as radon. Touch the maps to see data for your community.



Learn More

Learn about WTN topics by clicking on the topics to the left. Or, visit our [topic page](#).

WA Smoke & Air

WA Smoke & Air



MOBILE FRIENDLY APPLICATION

WA Smoke & Air

Goal: Make it easier for the public, particularly vulnerable populations, to get access to real-time information and resources during an emergency event

WA Smoke & Air

Goal: Make it easier for the public, particularly vulnerable populations, to get access to real-time information and resources during an emergency event

Emergency events include:

- Wildfires
- Extreme heat days

WA Smoke & Air

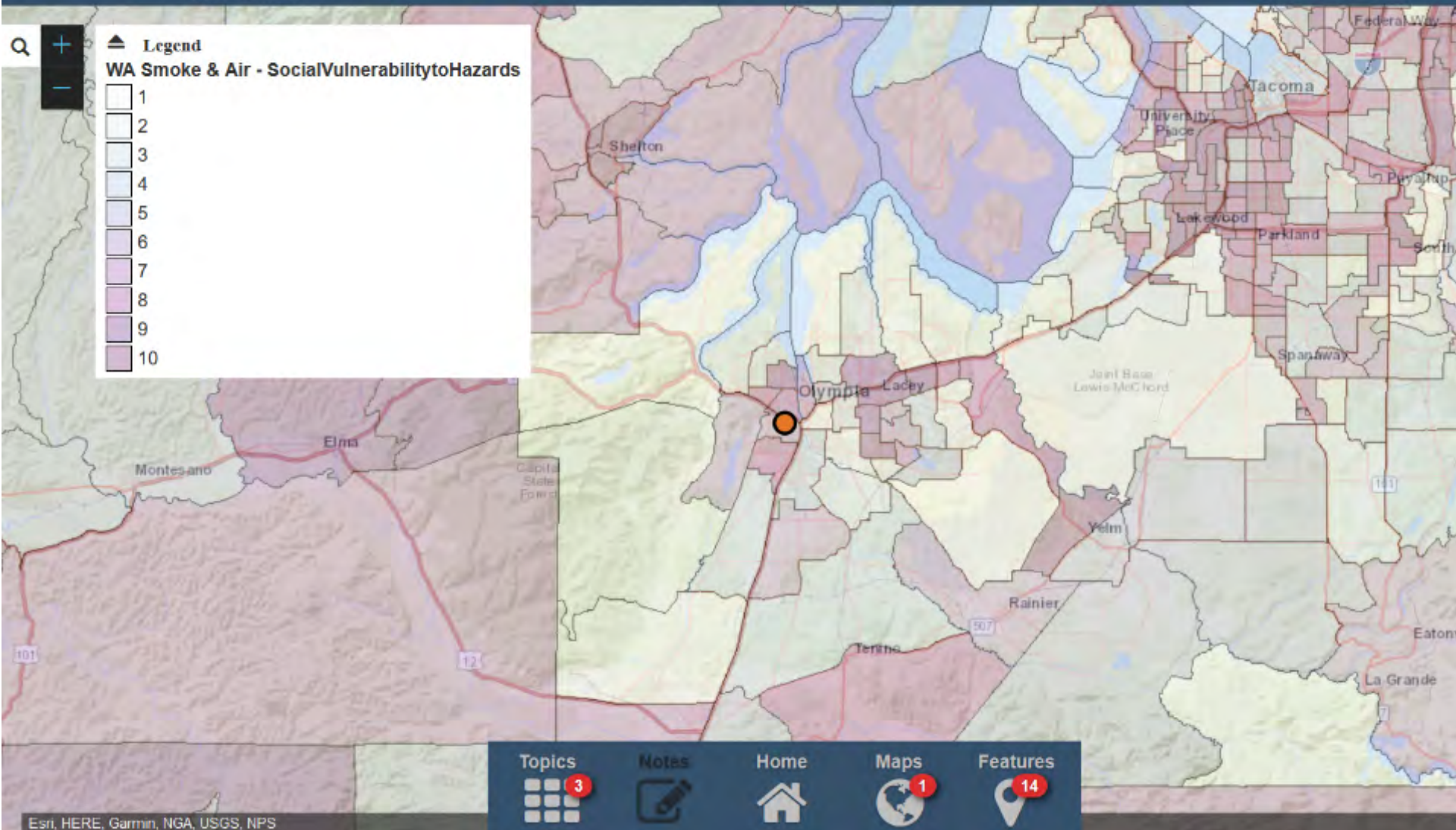
Goal: Make it easier for the public, particularly vulnerable populations, to get access to real-time information and resources during an emergency event

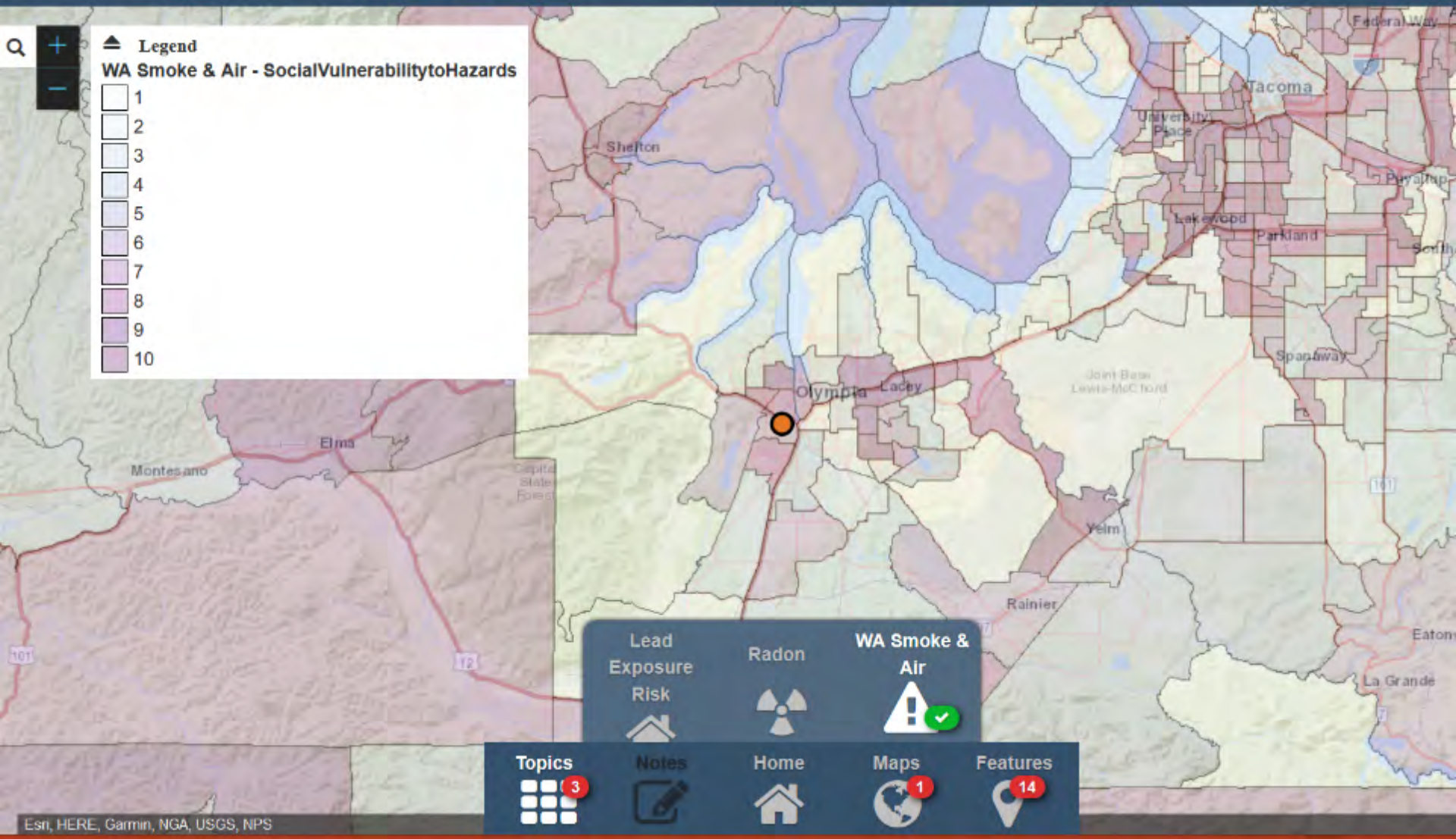
Emergency events include:

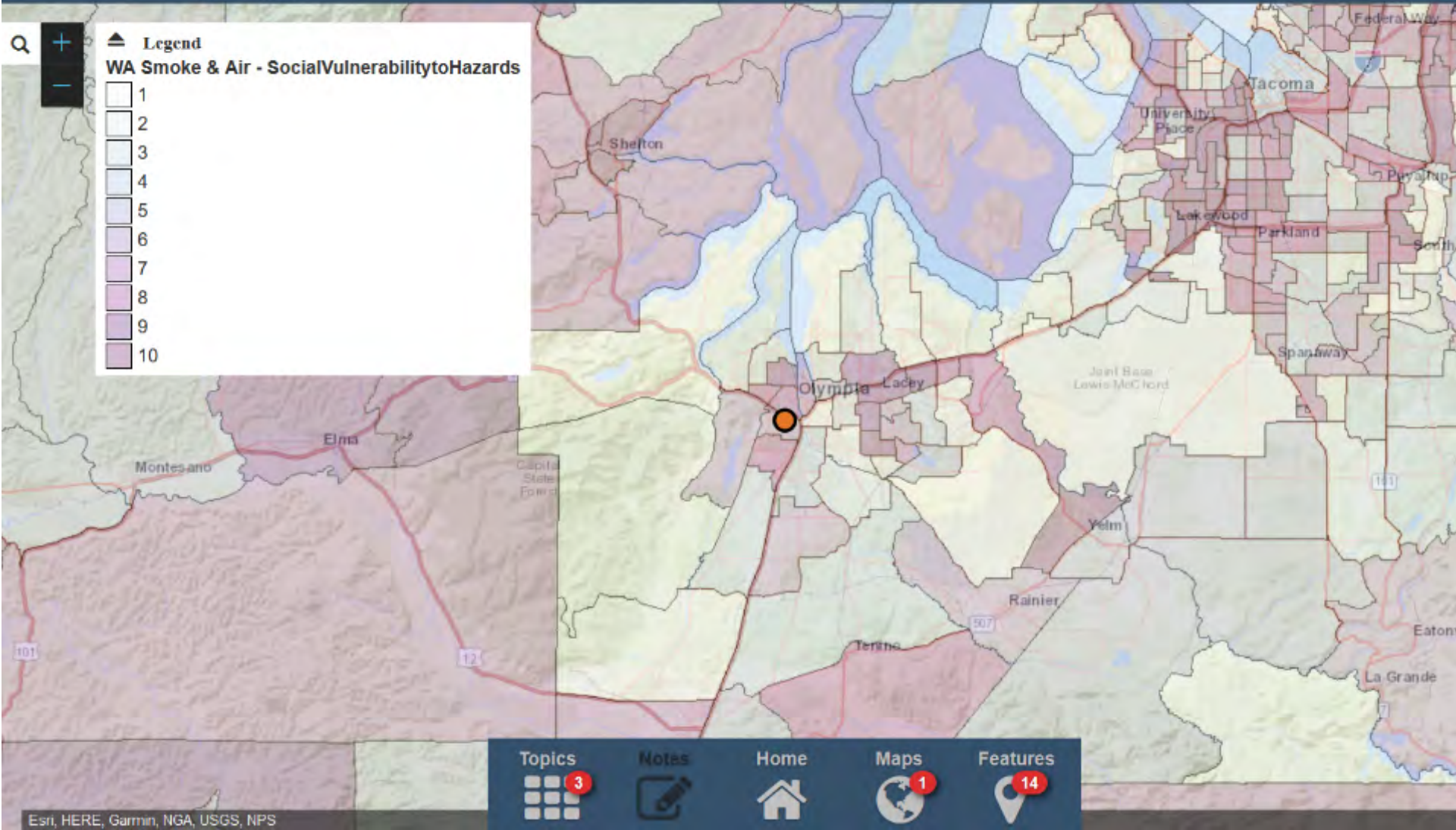
- Wildfires
- Extreme heat days

Two versions of the display:


- External display – for the public
- Internal display – for EPR staff use













 Environmental Health Disparities [Link](#)

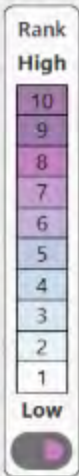
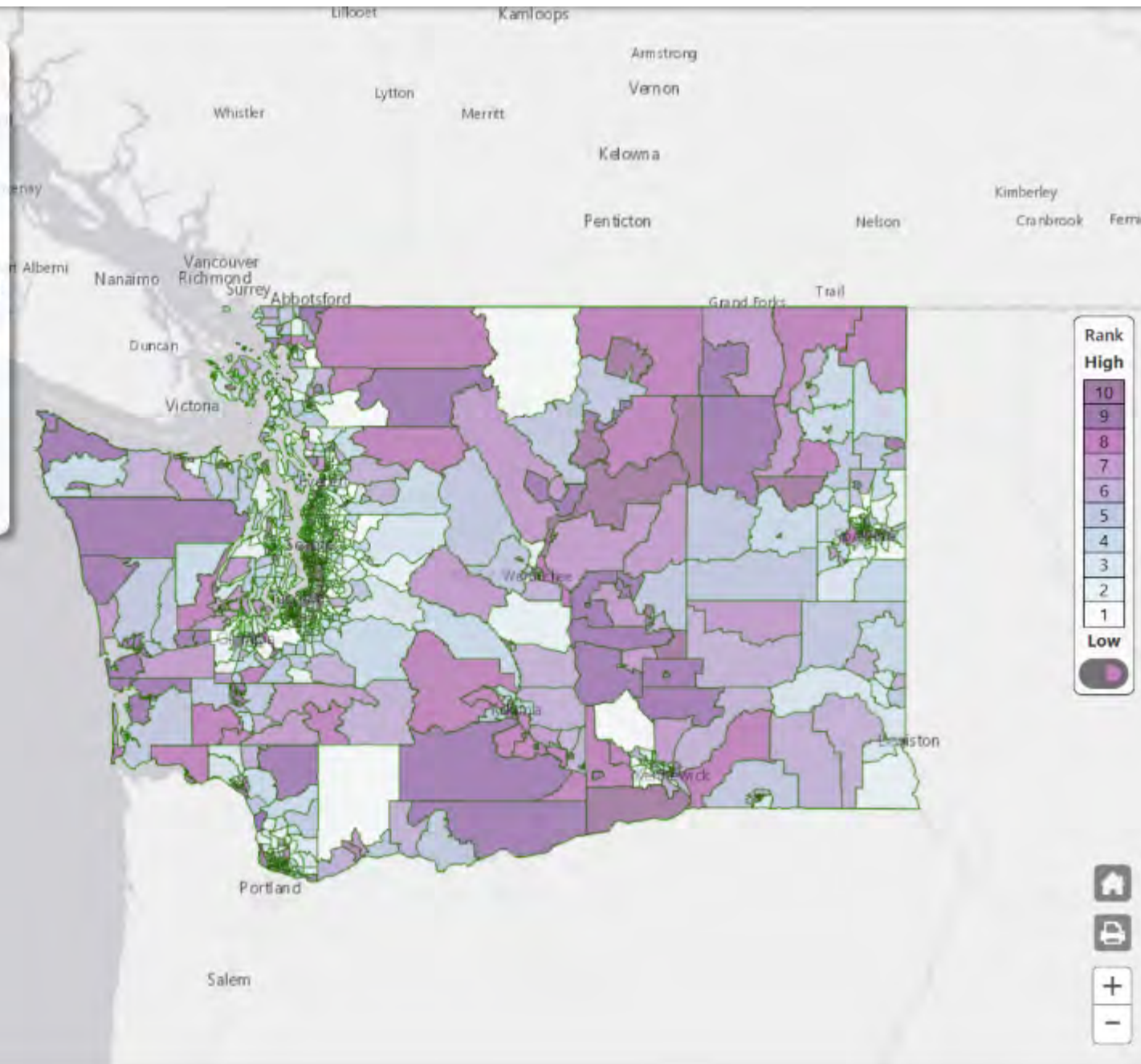
 Diesel Pollution and Disproportionate Impact [Link](#)






 Social Vulnerability to Hazards [Link](#)


 Lead Exposure Risk [Link](#)









 Health Disparities [Link](#)

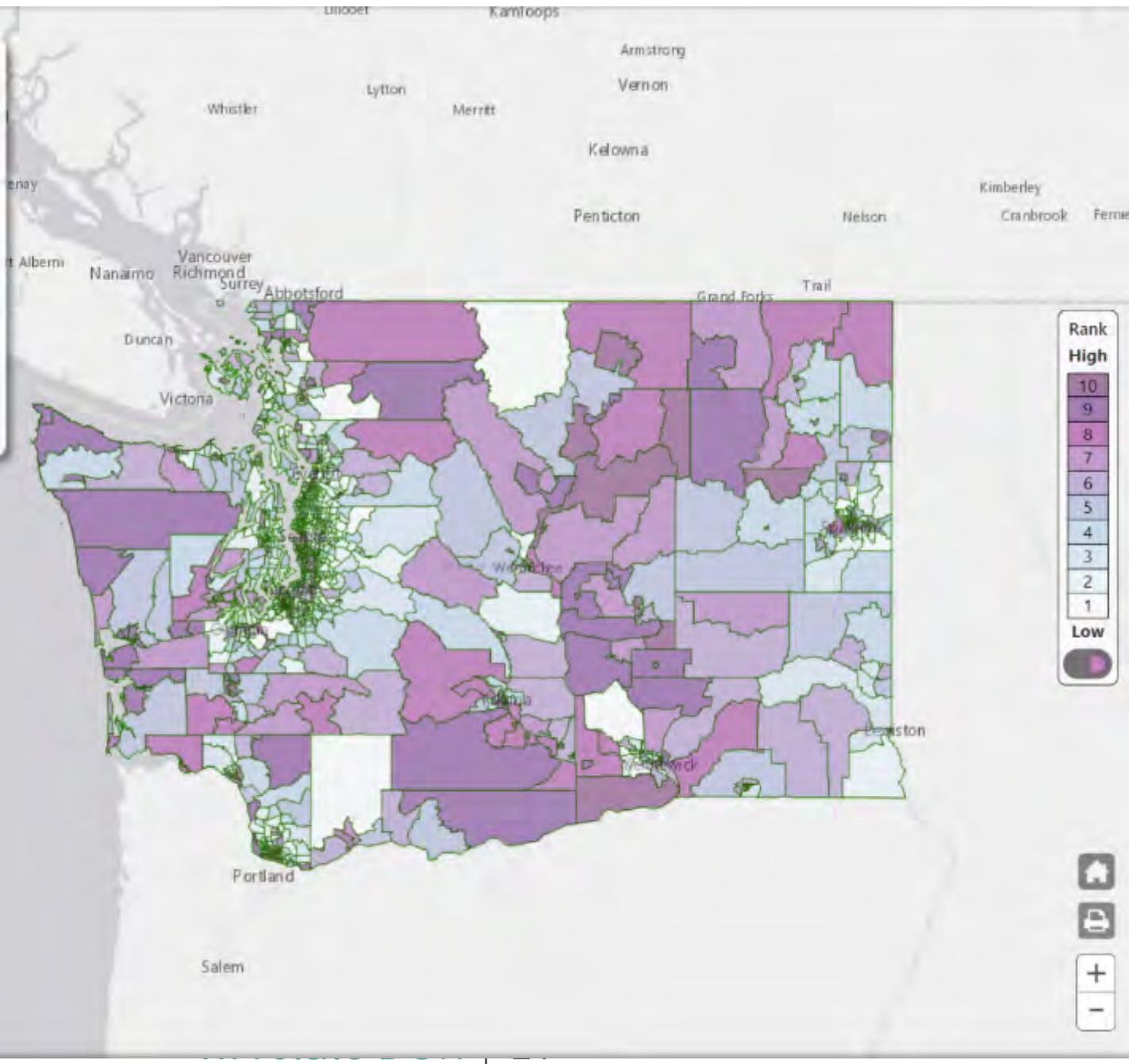
 Planning for Health [Link](#)



 Go Back to Topic Selection

-  **Social Vulnerability to Hazards** 
-  Household 
-  Housing 
-  SocioEconomic 














Go Back to Topic Selection

Social Vulnerability to Hazards

Household

ACS-Limited English (LEP) (%)

Population 65+ Living Alone (%)

Population with a Disability (%)

Single Parent Household (%)

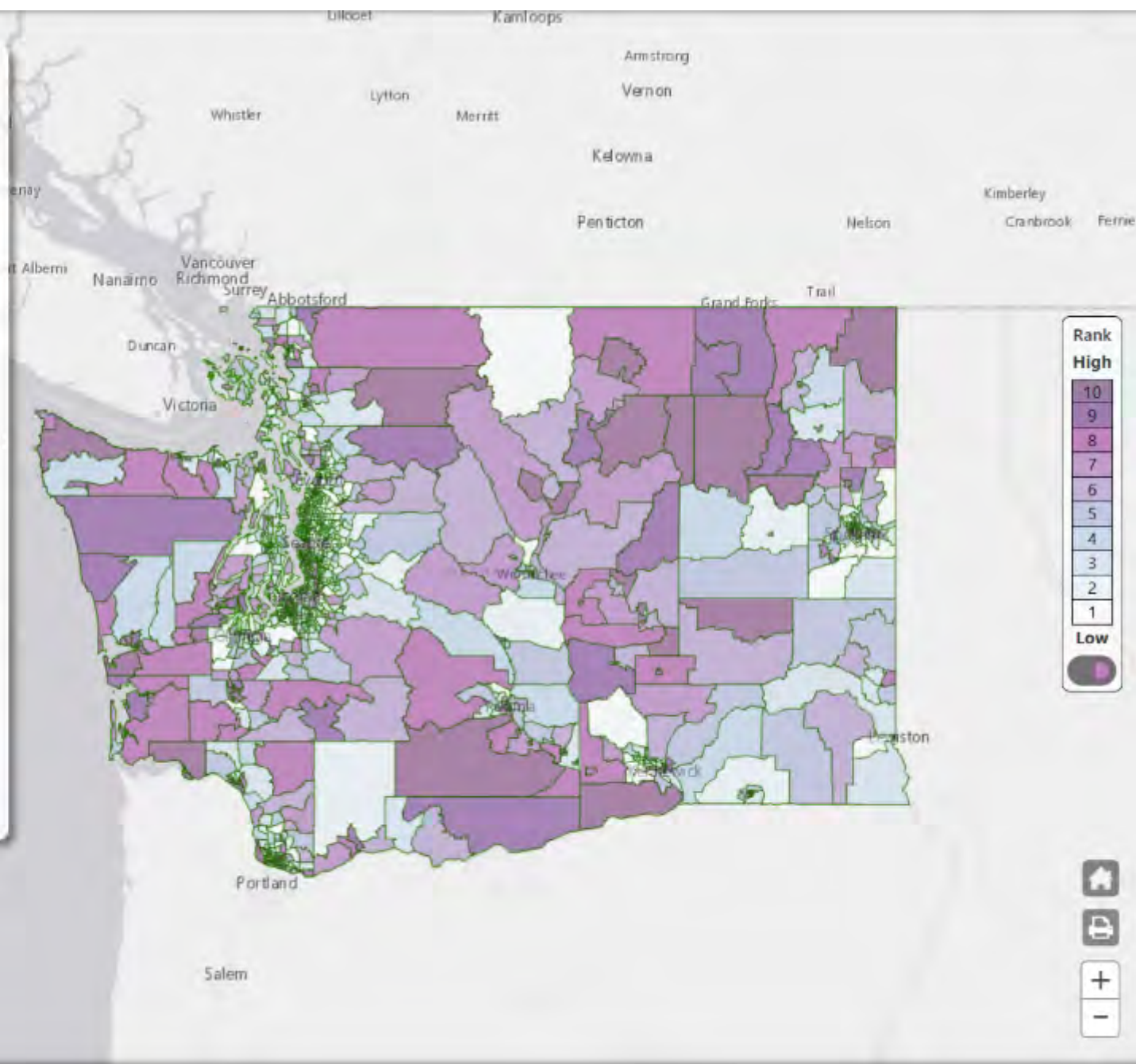
Housing

Housing with 10+ Units (%)

Mobile Homes (%)

Overcrowded Housing (%)

SocioEconomic





Go Back to Topic Selection

Single Parent Household (%)

Housing

Housing with 10+ Units (%)

Mobile Homes (%)

Overcrowded Housing (%)

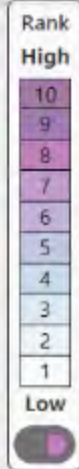
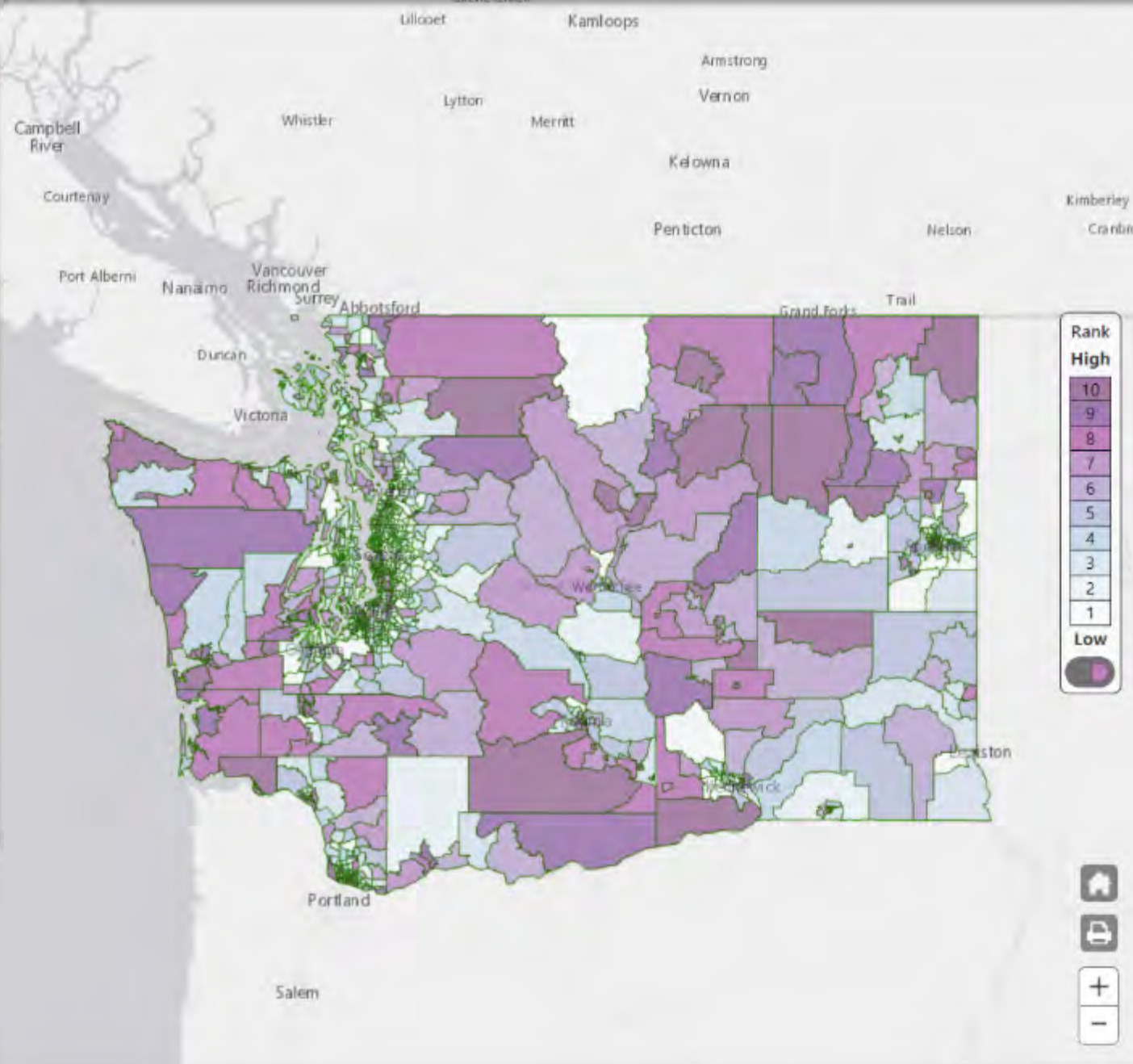
SocioEconomic

No Access to a Private Vehicle (%)

No High School Diploma (%)

Population Living in Poverty (%)

Unemployed (%)



0 30 60mi



☰ ☰ 📍 ⓘ ?

⬅️ Go Back to Topic Selection

(%)

Single Parent Household [\[chart\]](#) 9

(%)

🏠 Housing [\[chart\]](#) 8

Housing with 10+ Units (%) [\[chart\]](#)

Mobile Homes (%) [\[chart\]](#) 9

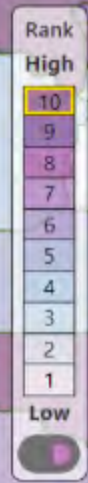
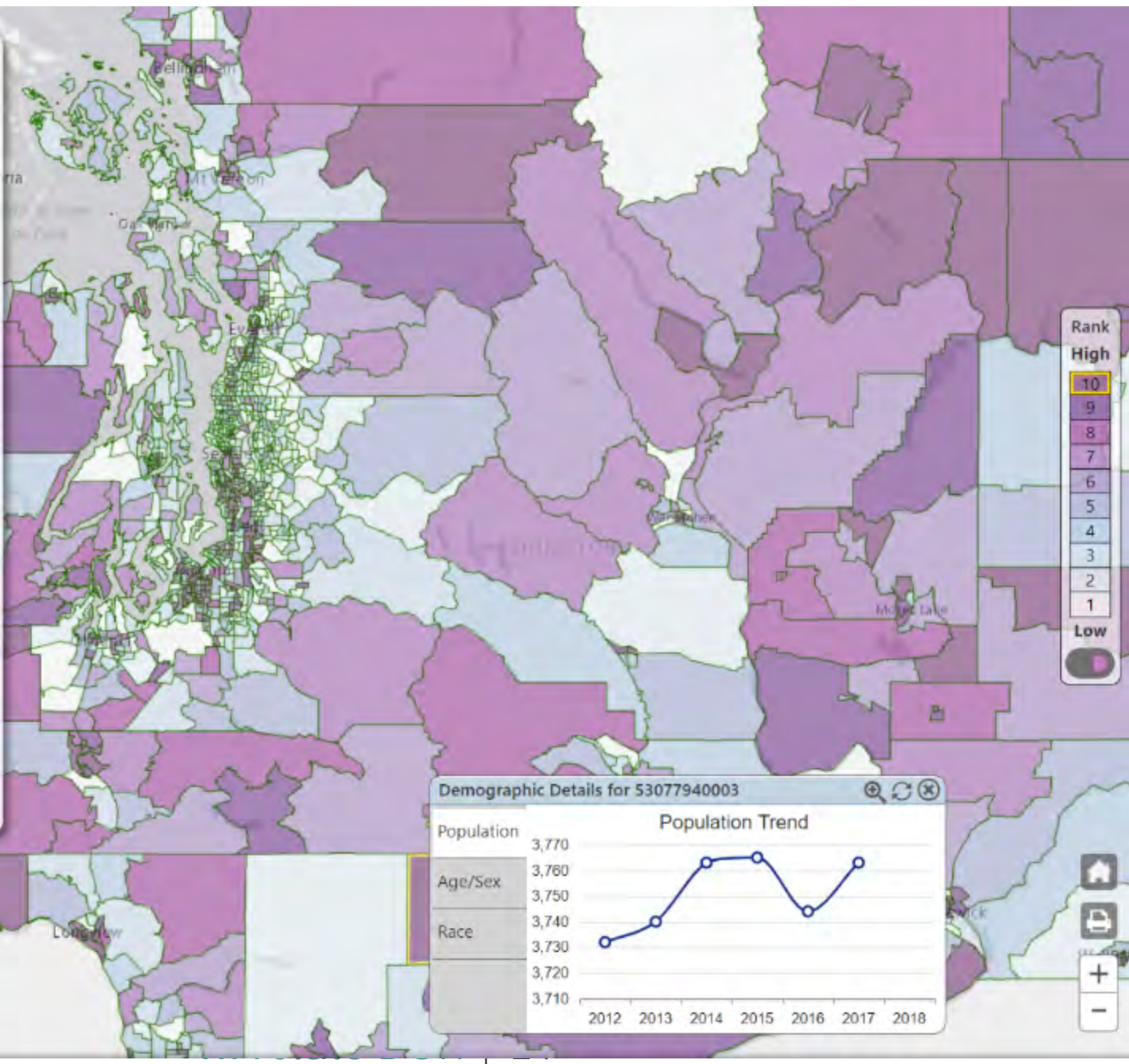
Overcrowded Housing (%) [\[chart\]](#) 10

🔗 SocioEconomic [\[chart\]](#) 10

No Access to a Private Vehicle [\[chart\]](#) 5

No High School Diploma [\[chart\]](#) 10

Population Living in Poverty [\[chart\]](#) 9



Earth Map

0 15 30mi

🏠

🖨️

+

-

WA Smoke & Air

WILDFIRE SEASON EXAMPLE

Q

Legend

WA Smoke & Air - SocialVulnerabilitytoHazards

1
2
3
4
5
6
7
8
9
10

Location Information

IBL Rank: 7
Census Tract: 53037975100
County: Kittitas

Topics 3

Notes

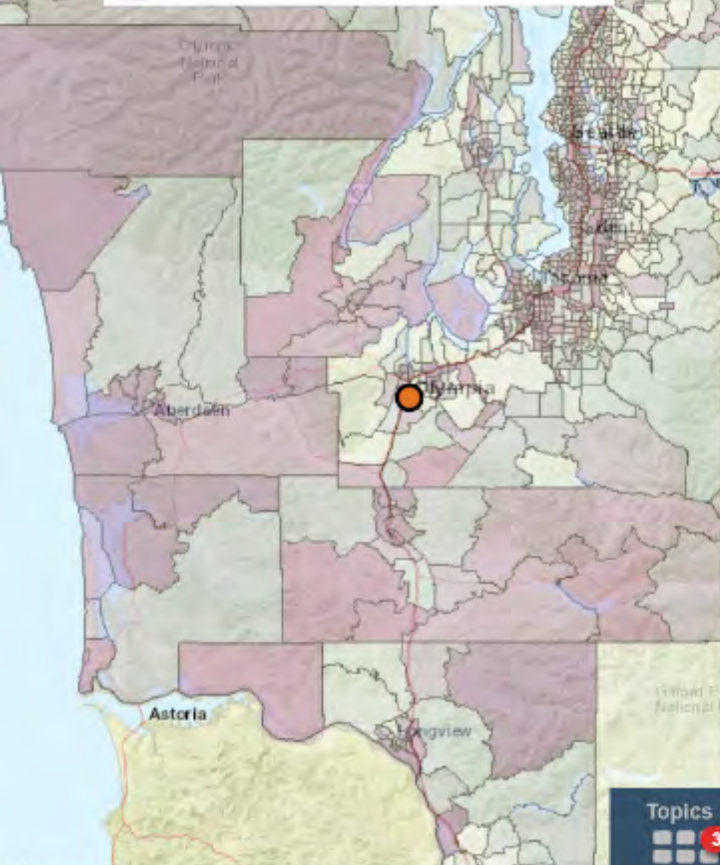
Home

Maps 1

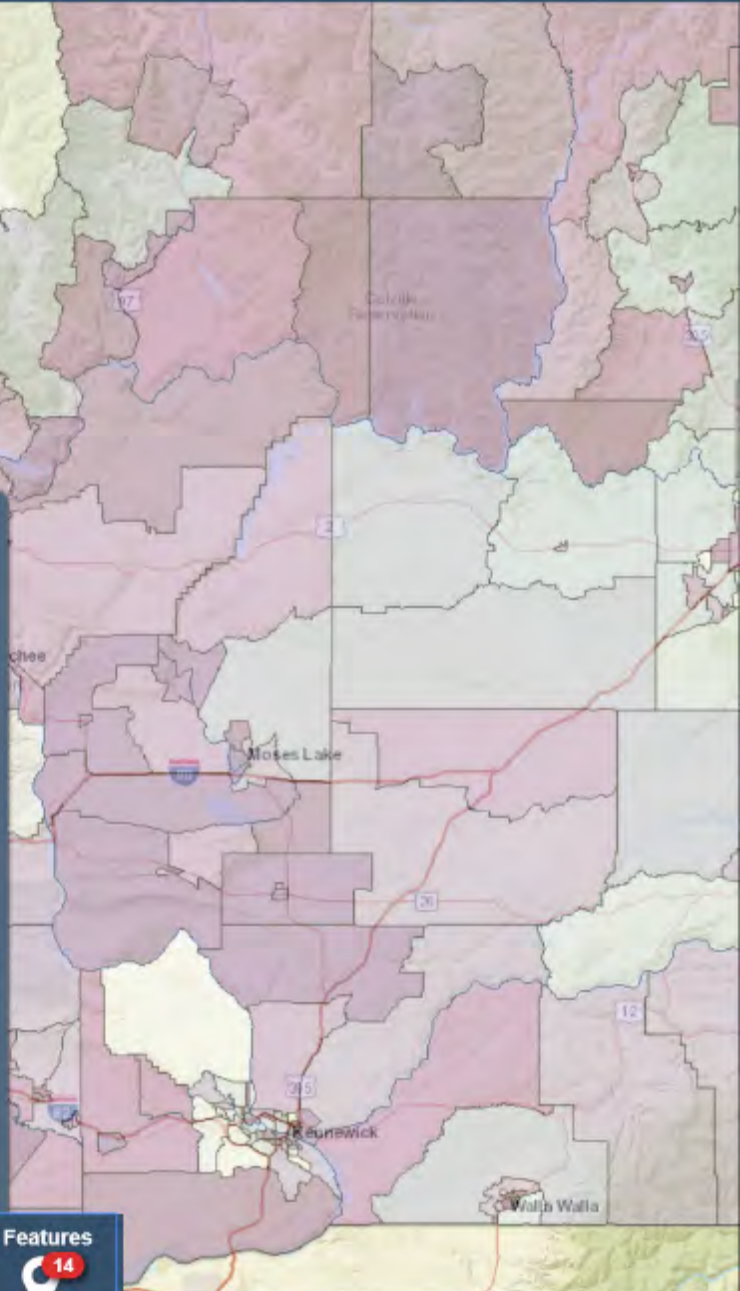
Features 14

Legend
WA Smoke & Air - Social Vulnerability to Hazards

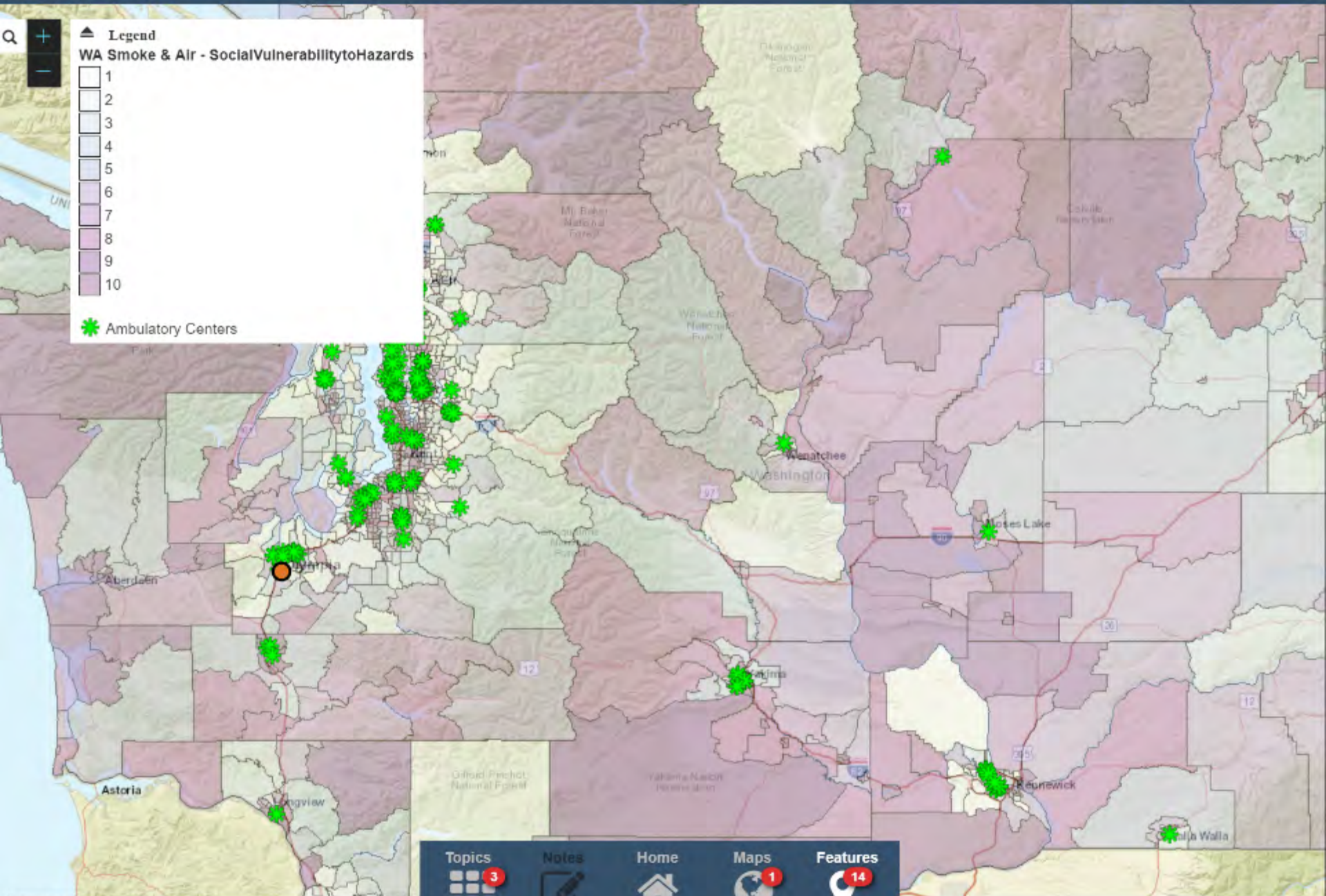
1
2
3
4
5
6
7
8
9
10



Ambulatory Centers	Childcare Centers	Clinics
Cooling Centers	County Boundaries	Current Air Quality
Current Wildfire Area	Current Wildfires	Farmworker Housing
Hospitals	HMS Smoke Plumes	K-12 Public Schools
Tribal Clinics	Tribal Lands	



Topics 3	Notes	Home	Maps 1	Features 14
----------	-------	------	--------	-------------



Legend

WA Smoke & Air - Social Vulnerability to Hazards

1
2
3
4
5
6
7
8
9
10

Ambulatory Centers

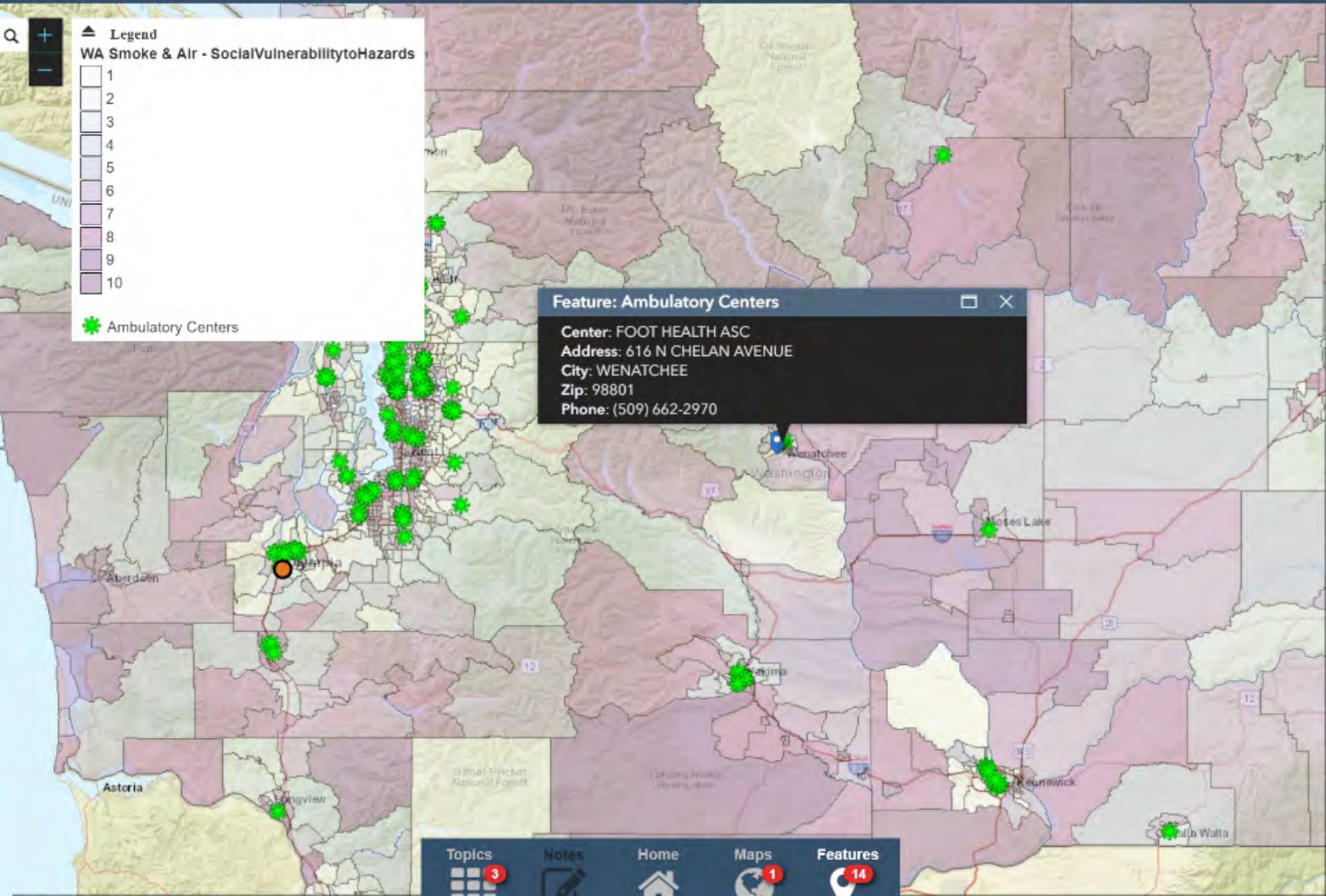
Topics 3

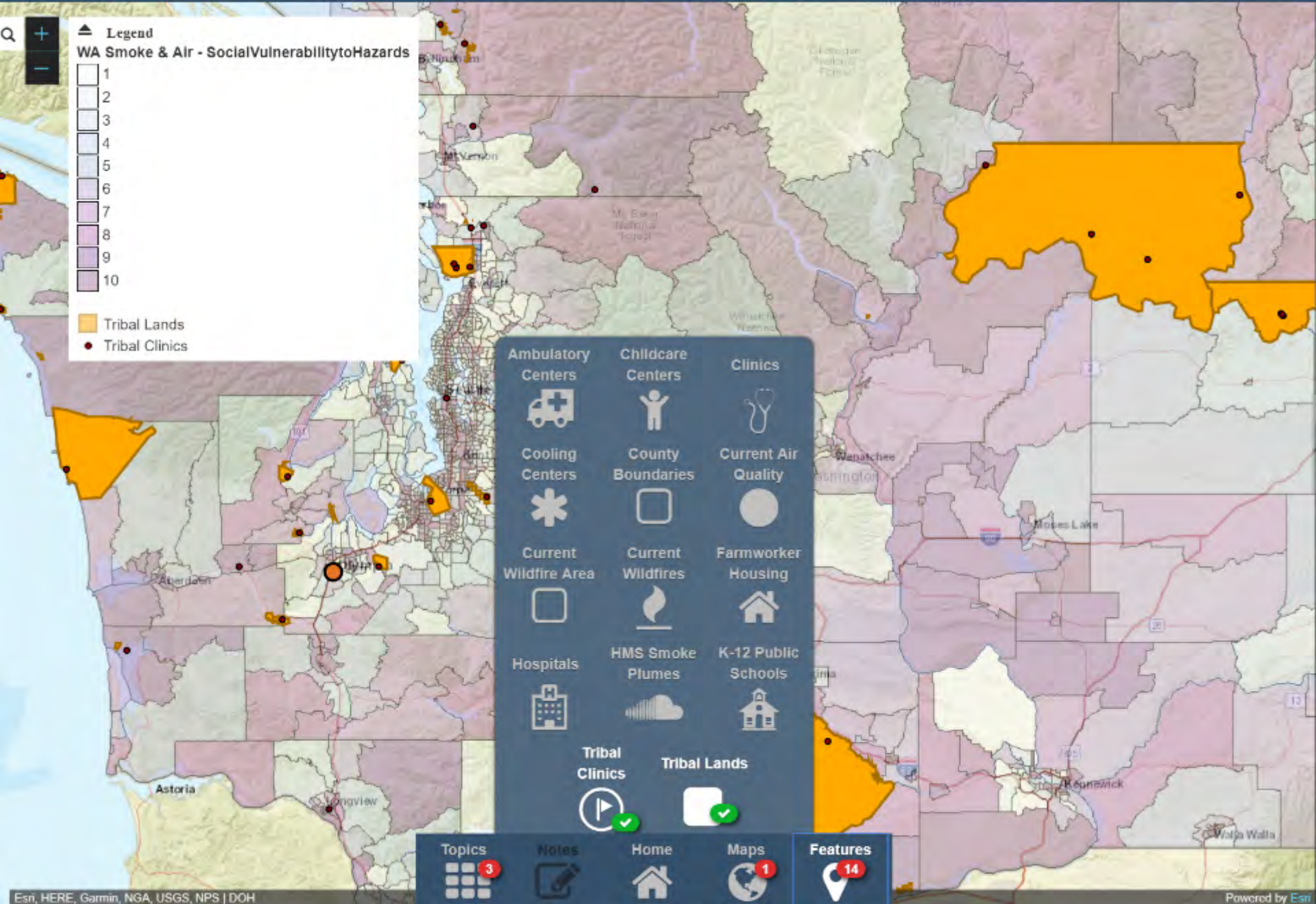
Notes

Home

Maps 1

Features 14





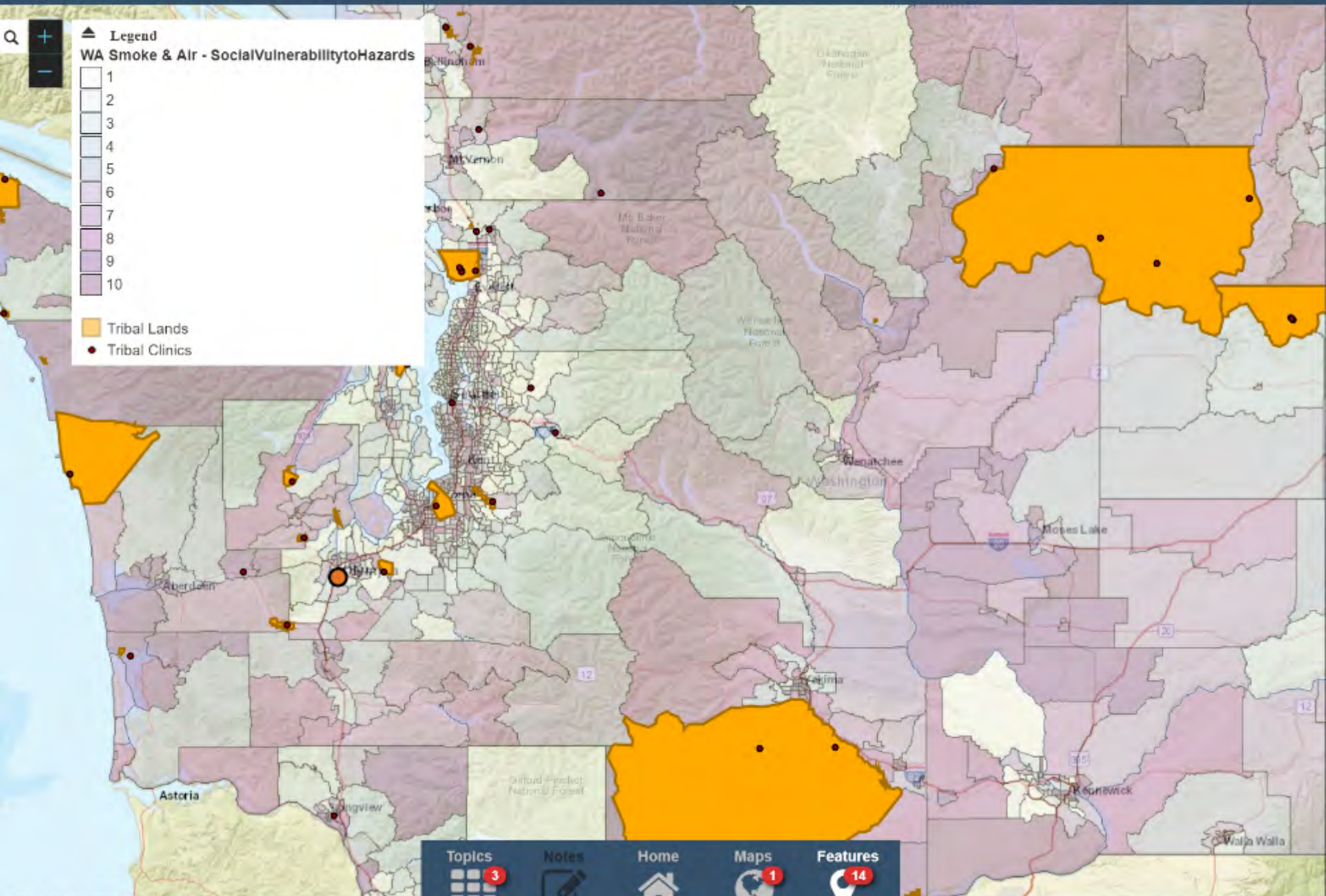
Legend

WA Smoke & Air - Social Vulnerability to Hazards

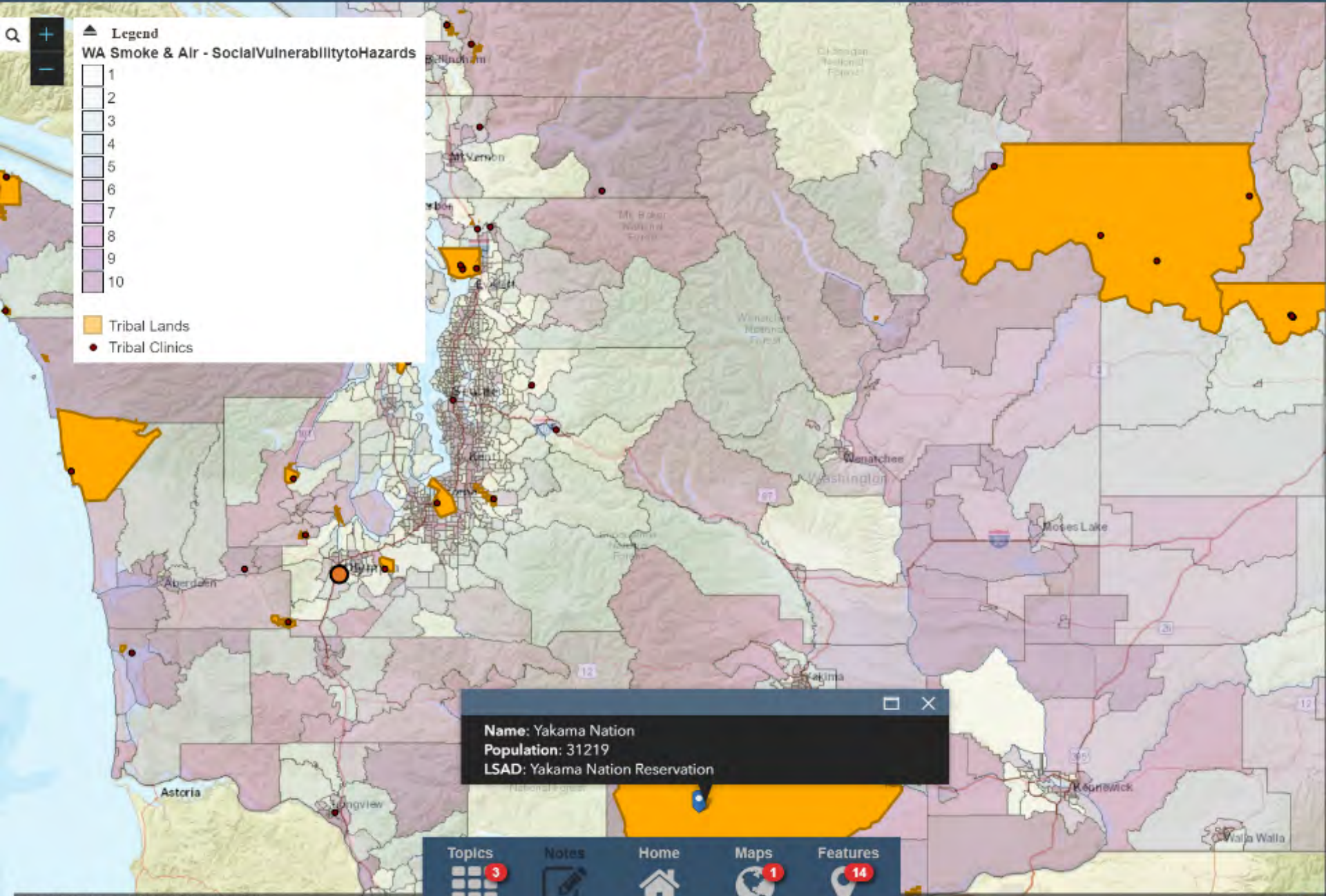
- 1
- 2
- 3
- 4
- 5
- 6
- 7
- 8
- 9
- 10
- Tribal Lands
- Tribal Clinics

Ambulatory Centers	Childcare Centers	Clinics
Cooling Centers	County Boundaries	Current Air Quality
Current Wildfire Area	Current Wildfires	Farmworker Housing
Hospitals	HMS Smoke Plumes	K-12 Public Schools
Tribal Clinics	Tribal Lands	

Topics 3	Notes	Home	Maps 1	Features 14
----------	-------	------	--------	-------------



Topics 3
Notes
Home
Maps 1
Features 14



Legend

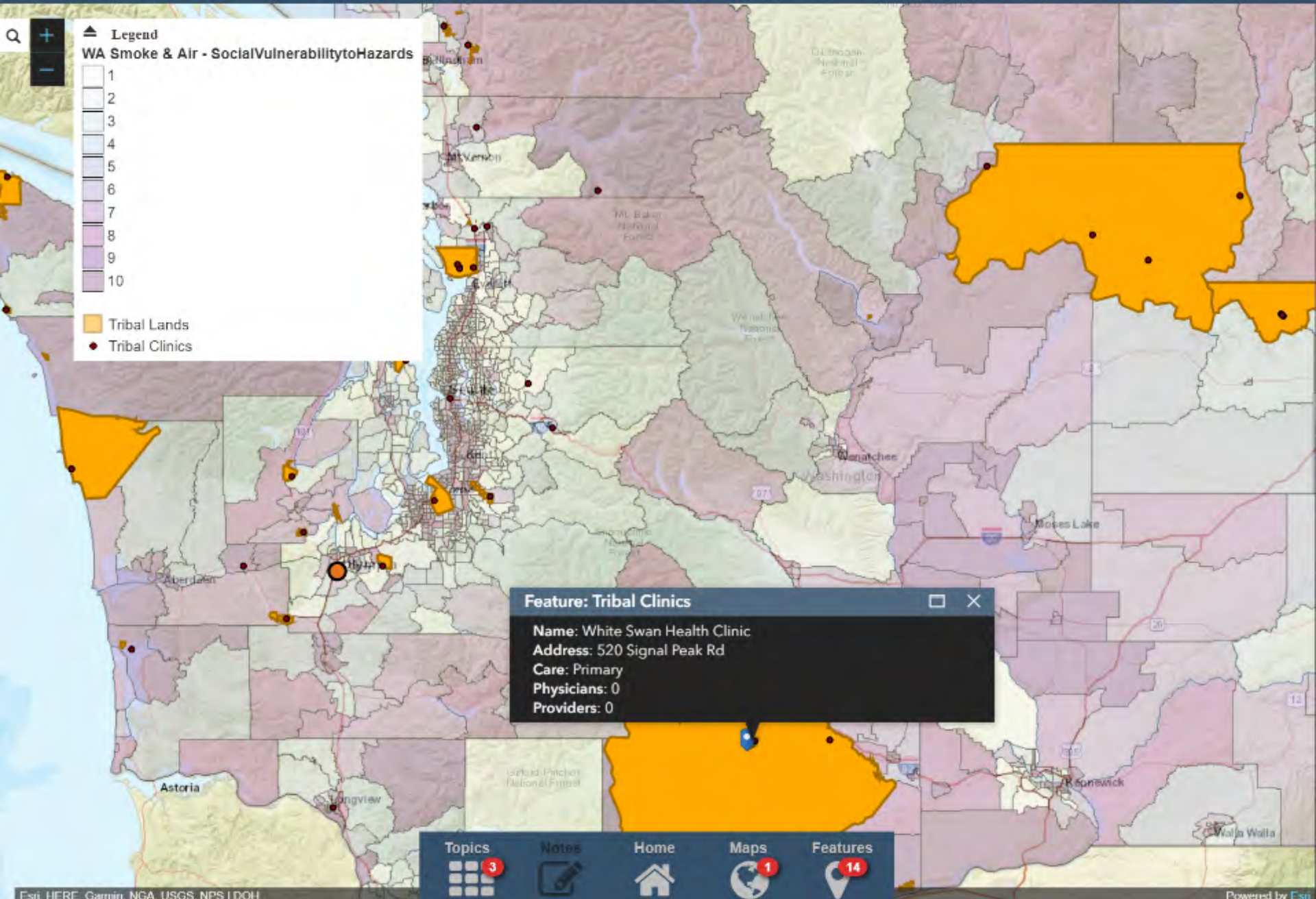
WA Smoke & Air - Social Vulnerability to Hazards

- 1
- 2
- 3
- 4
- 5
- 6
- 7
- 8
- 9
- 10

- Tribal Lands
- Tribal Clinics

Name: Yakama Nation
Population: 31219
LSAD: Yakama Nation Reservation

Topics Notes Home Maps Features



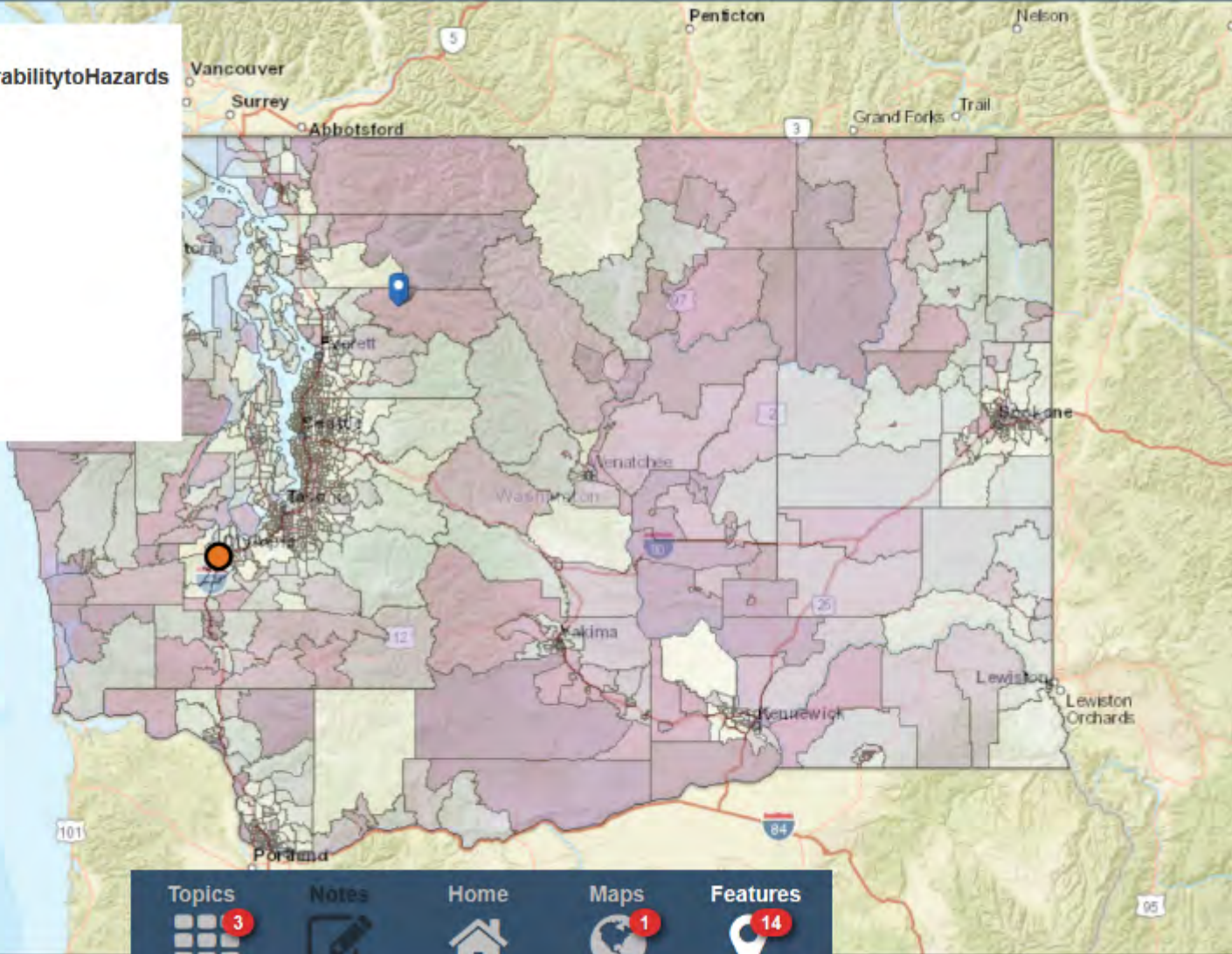
WA Smoke & Air

EXTREME HEAT DAY EXAMPLE



Legend

WA Smoke & Air - Social Vulnerability to Hazards



Topics



Notes



Home



Maps



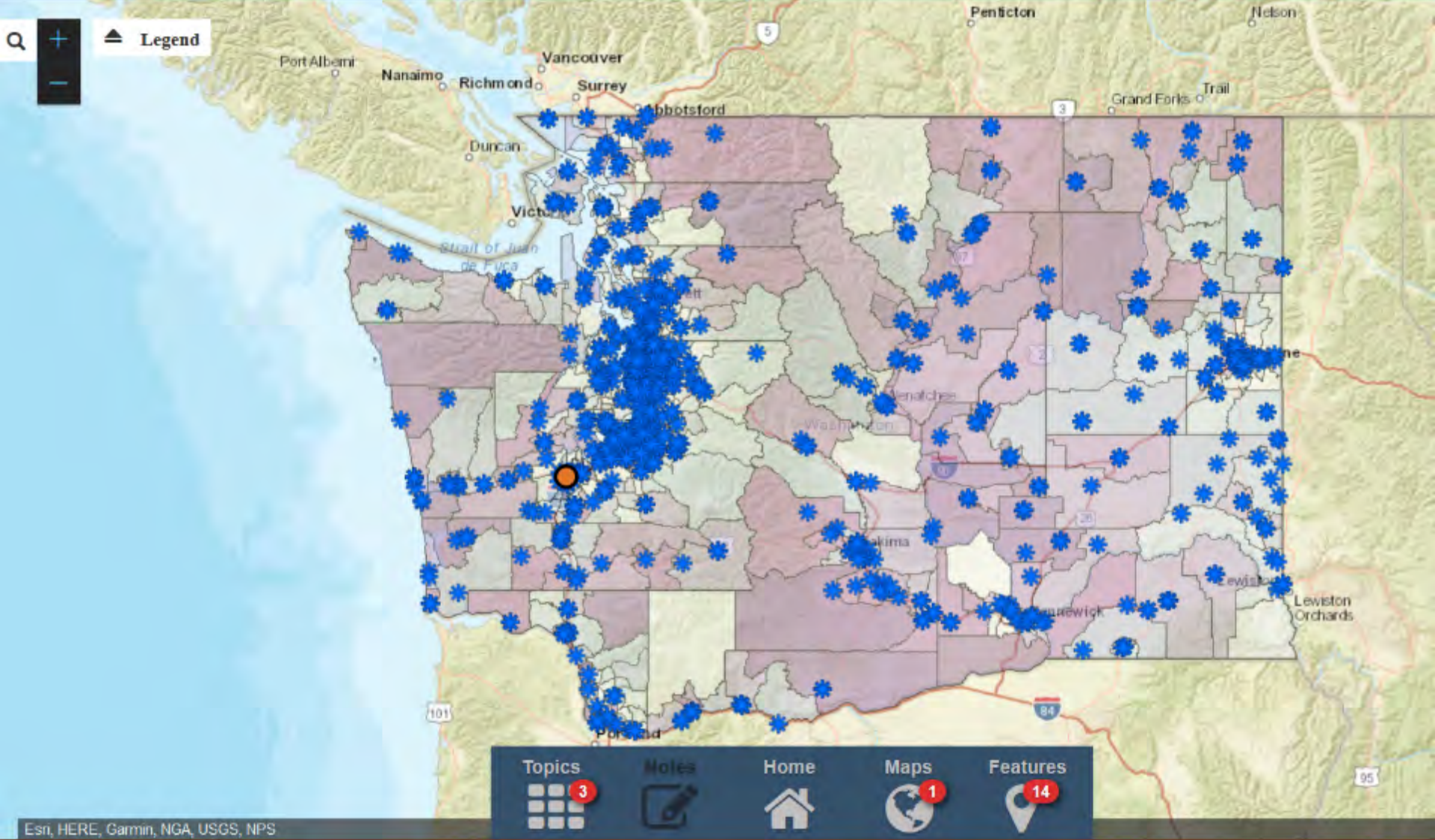
Features



The map interface includes a search bar at the top left, a legend, and a central legend panel with the following categories and icons:

- Ambulatory Centers (ambulance icon)
- Childcare Centers (child icon)
- Clinics (stethoscope icon)
- Cooling Centers (snowflake icon with a green checkmark)
- County Boundaries (square outline icon)
- Current Air Quality (circle icon)
- Current Wildfire Area (square outline icon)
- Current Wildfires (flame icon)
- Farmworker Housing (house icon)
- Hospitals (hospital building icon)
- HMS Smoke Plumes (cloud with smoke icon)
- K-12 Public Schools (school building icon)
- Tribal Clinics (square icon)
- Tribal Lands (square icon)

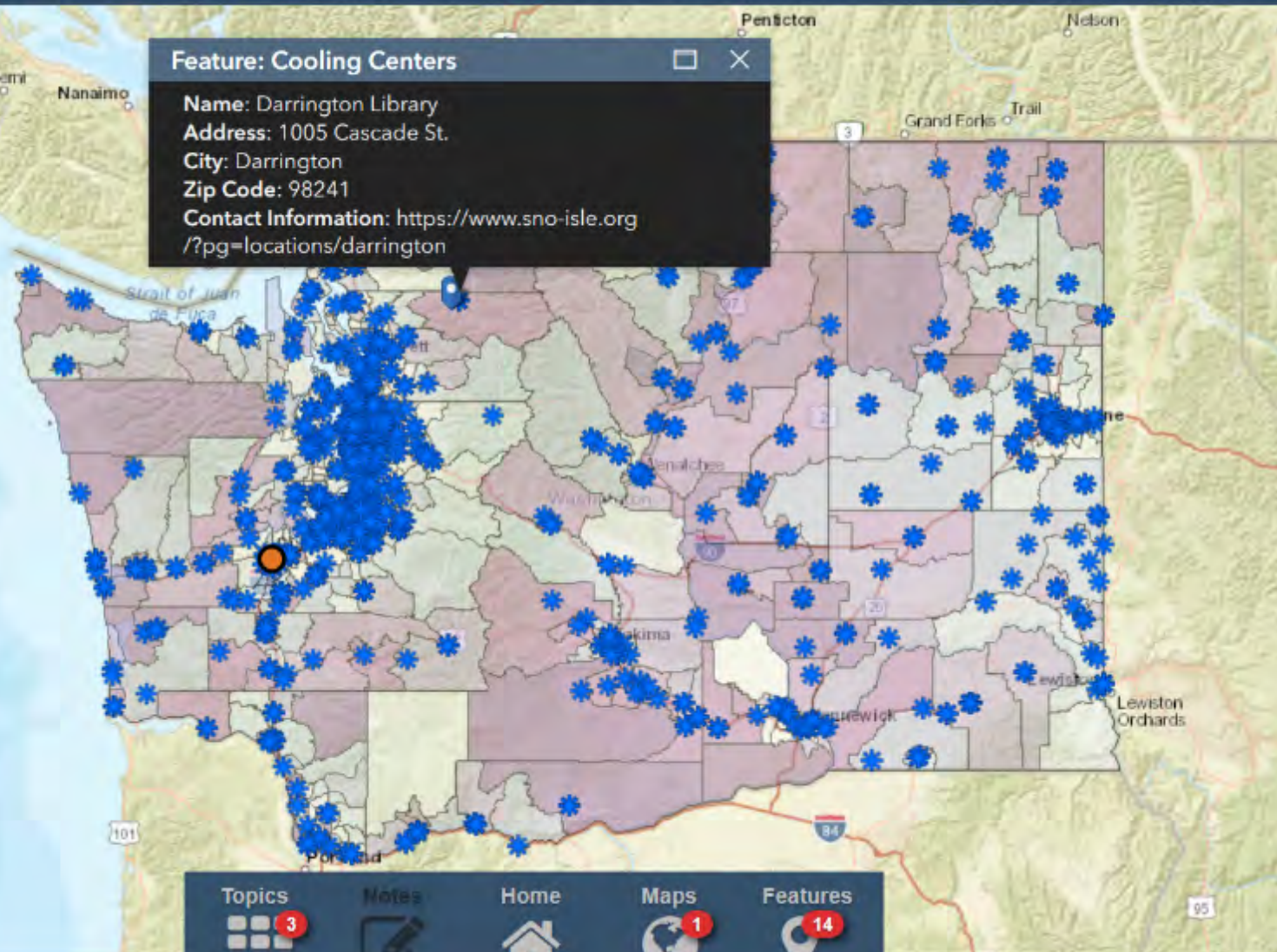
At the bottom, there are navigation buttons: Topics (3 items), Notes, Home, Maps (1 item), and Features (14 items).



Legend

Feature: Cooling Centers

Name: Darrington Library
Address: 1005 Cascade St.
City: Darrington
Zip Code: 98241
Contact Information: <https://www.sno-isle.org/?pg=locations/darrington>



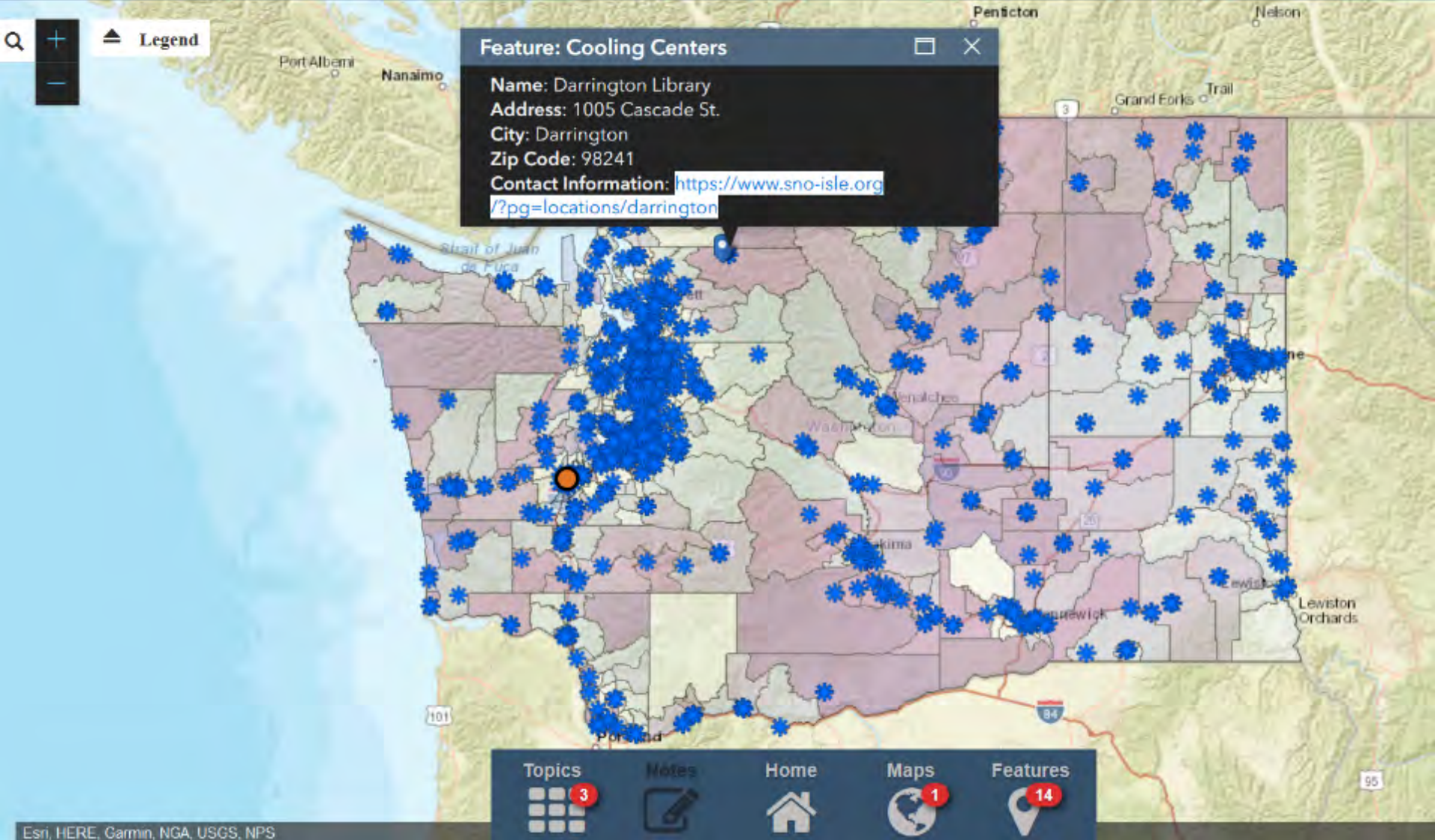
Topics 3

Notes

Home

Maps 1

Features 14



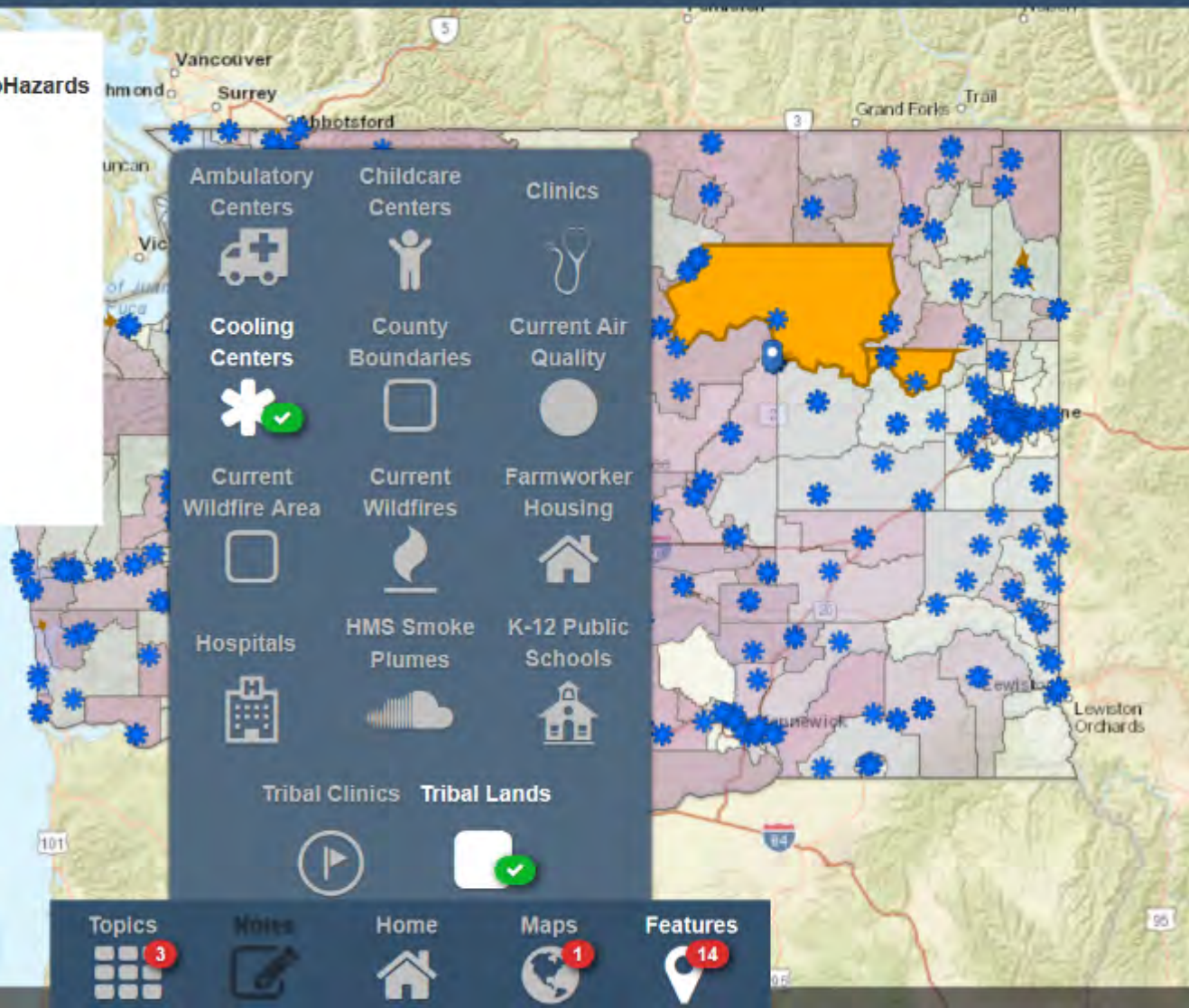


Legend

WA Smoke & Air - Social Vulnerability to Hazards

- 1
- 2
- 3
- 4
- 5
- 6
- 7
- 8
- 9
- 10

Tribal Lands



Ambulatory Centers	Childcare Centers	Clinics
Cooling Centers	County Boundaries	Current Air Quality
Current Wildfire Area	Current Wildfires	Farmworker Housing
Hospitals	HMS Smoke Plumes	K-12 Public Schools
Tribal Clinics	Tribal Lands	

Topics Notes Home Maps Features

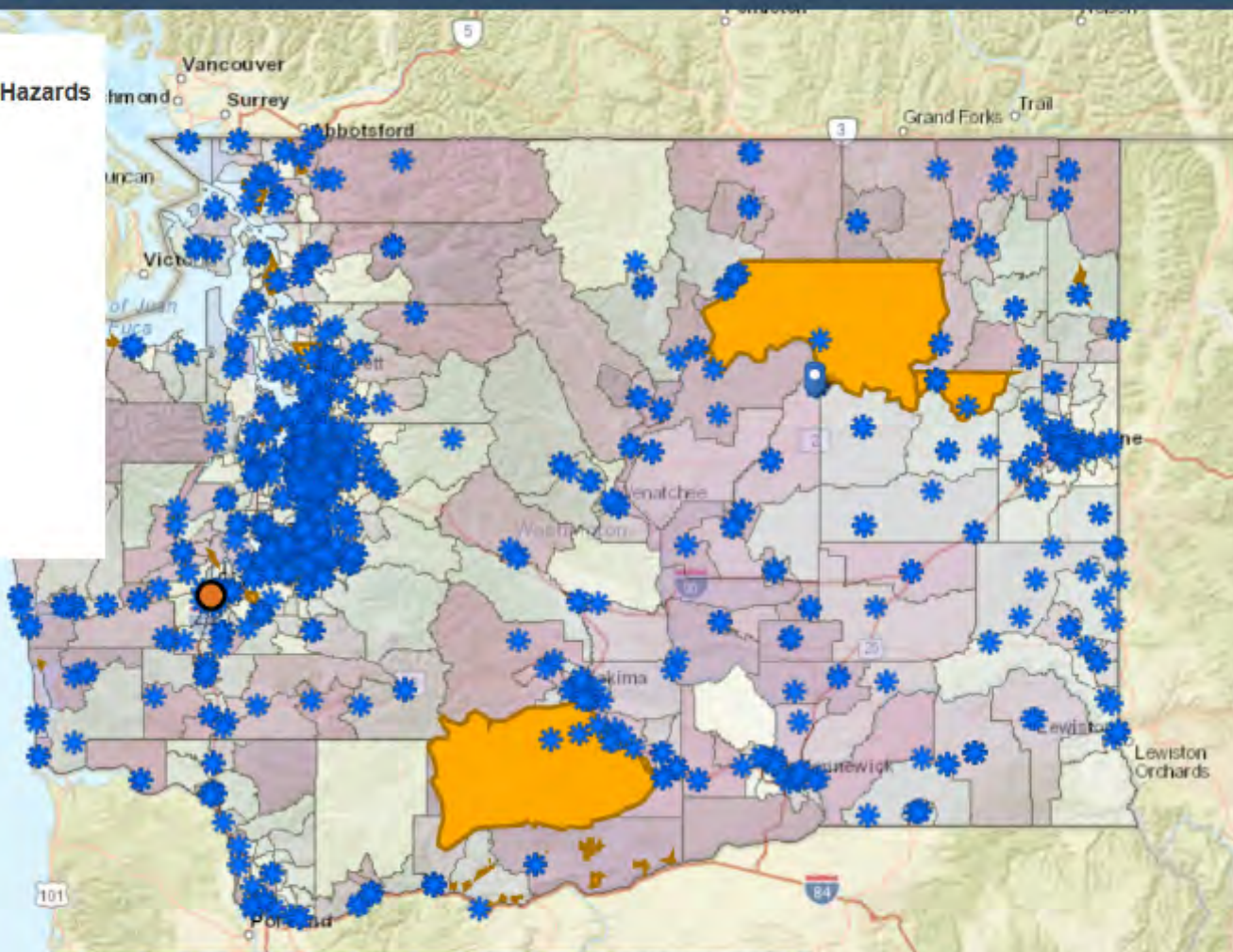


Legend

WA Smoke & Air - Social Vulnerability to Hazards

- 1
- 2
- 3
- 4
- 5
- 6
- 7
- 8
- 9
- 10

Tribal Lands



Topics **3** | Home | Maps **1** | Features **14**

Questions?



Kennly Asato

360-236-4087

Kennly.Asato@doh.wa.gov

Lauren Freeland

360-236-3246

Lauren.Freeland@doh.wa.gov

