



HEALTH IMPACT ASSESSMENT: ELEVATING PUBLIC HEALTH DATA AND TRIBAL VOICES IN DECISION-MAKING

AUGUST 30, 2016

Speakers:

Amber Lenhart, Health Impact Project

Raquelle Myers, National Indian Justice Center

**Joseph Kunkel, Sustainable Native Communities
Collaborative**

Moderator:

Ruth Lindberg, Health Impact Project

Health Impact Assessment

An Overview

A collaboration between Robert Wood Johnson Foundation and The Pew Charitable Trusts.

Presentation Outline

- **About the Health Impact Project**
- **HIA: One solution to a challenge**
- **Definition and background of HIA**
- **Examples and Resources**



About the Health Impact Project

The Health Impact Project

Who?

A collaboration of the Robert Wood Johnson Foundation and The Pew Charitable Trusts

Why?

To reduce health inequities and improve the health of all people by ensuring that health is a valued and routine consideration in decisions affecting them.

How?

Through conducting federal-level HIAs; providing training, resources, and networking opportunities; and funding HIA projects.

How We Work

Funding

- Funded 100 HIAs

Conducting

- Completed four federal HIAs, one in progress

Training

- Trained over 800 practitioners

Convening

- Gather 500 professionals at each national meeting

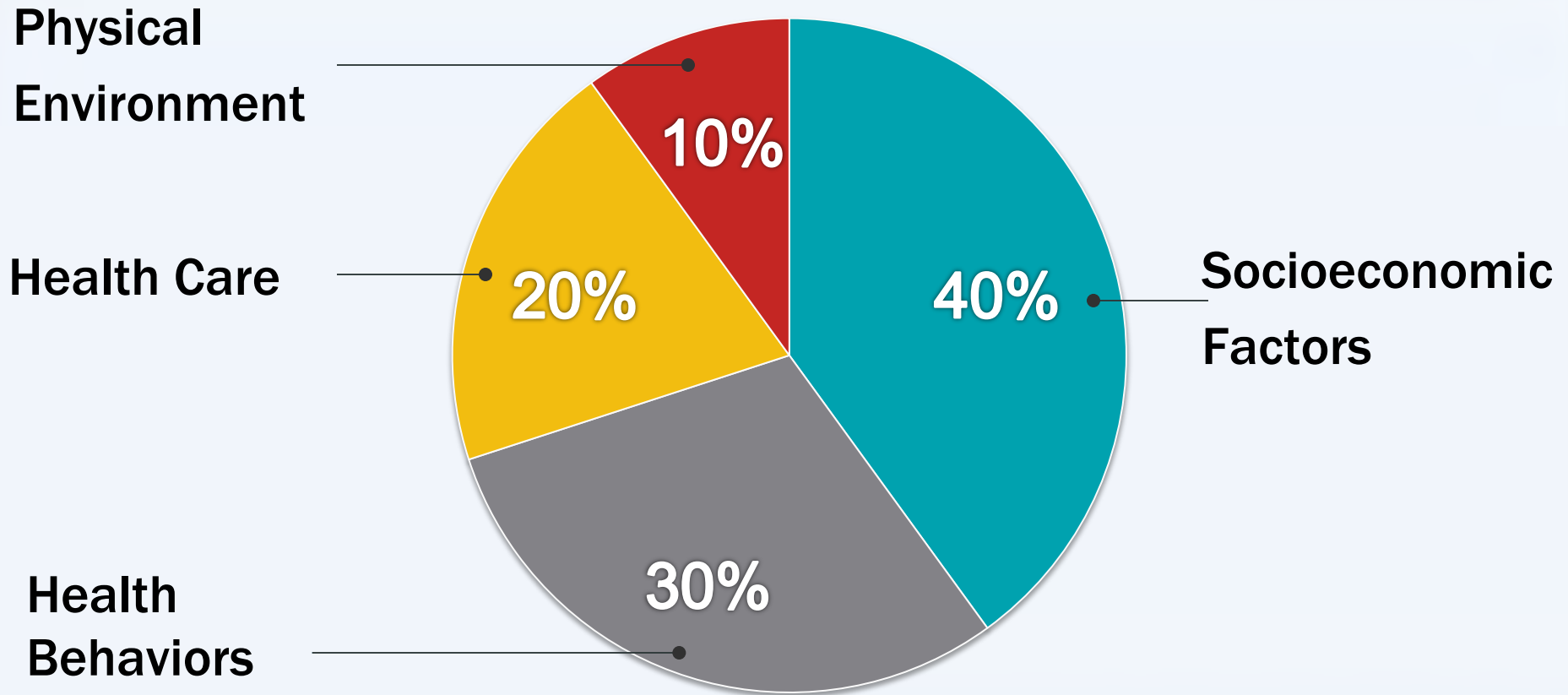


HIA: One Solution to a Challenge



“We have forgotten that much of our health is dictated by where we live, what surrounds us all the time”
—Richard Jackson

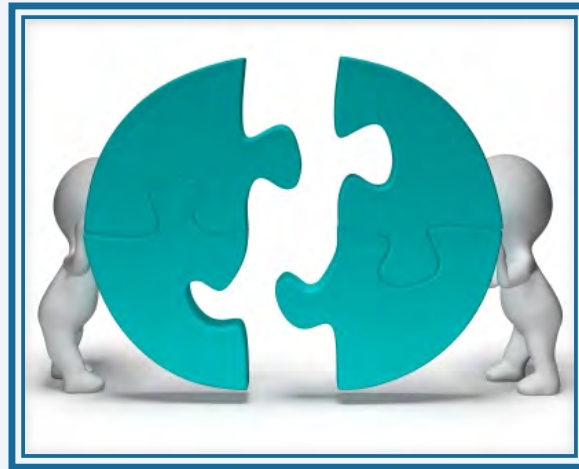
Health Factors



Adapted from the University of Wisconsin Population Health Institute's County Health Rankings model, 2010. <http://www.countyhealthrankings.org>

The Challenge

Many daily policy decisions made in sectors such as housing, transportation, natural resources and energy, education, and employment have significant health implications that go unrecognized.





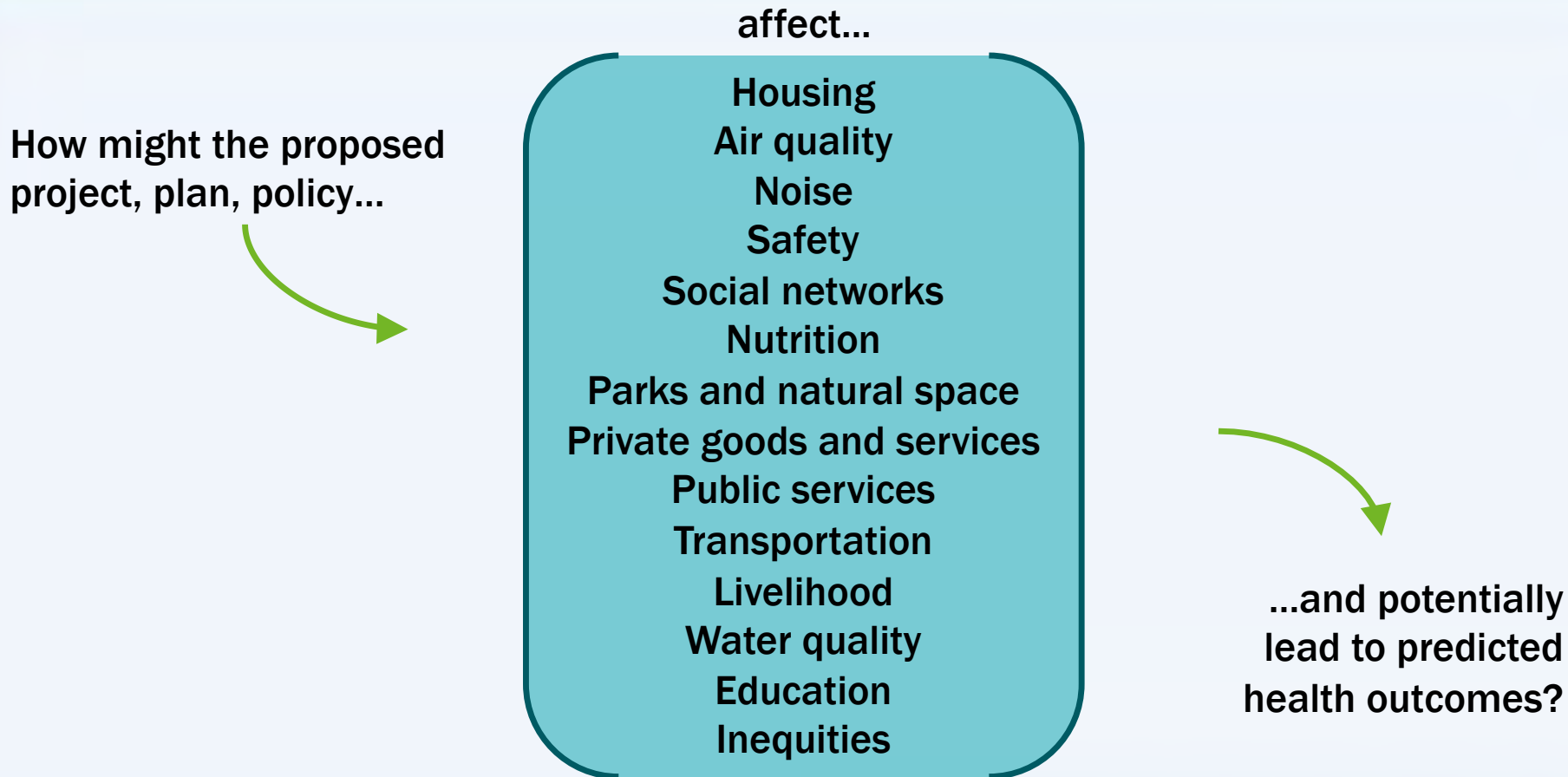
Definition and Background of HIA

HIA: A Tool for Improved Decision Making

“A structured process that uses scientific data, professional expertise, and stakeholder input to identify and evaluate public health consequences of proposals and suggests actions that could be taken to minimize adverse health impacts and optimize beneficial ones.”

Source: “Improving Health in the United States: The Role of Health Impact Assessments” by the National Research Council, September 2011

HIA Addresses Determinants of Health

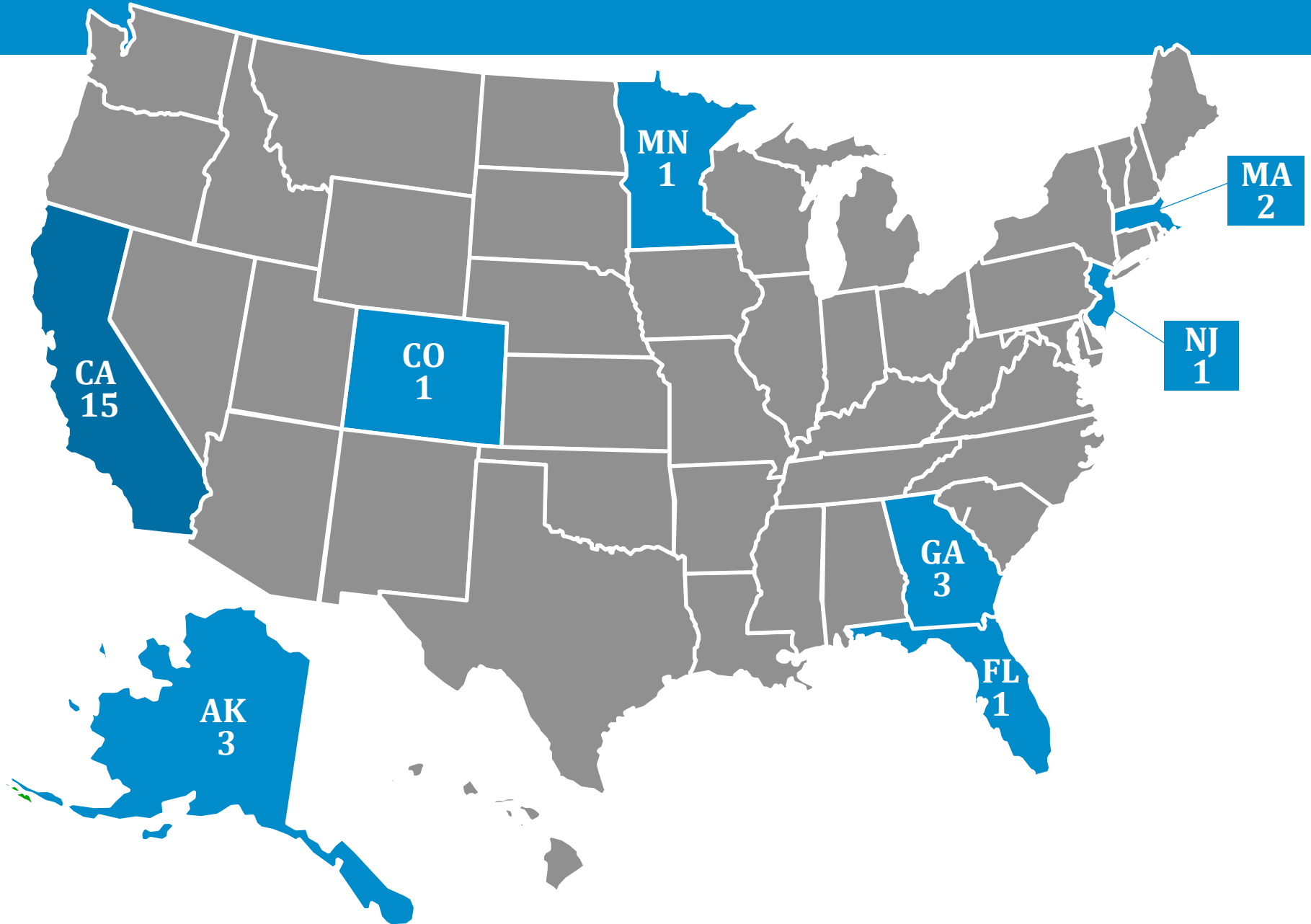


Key Points about HIA

A structured, but flexible, process that:

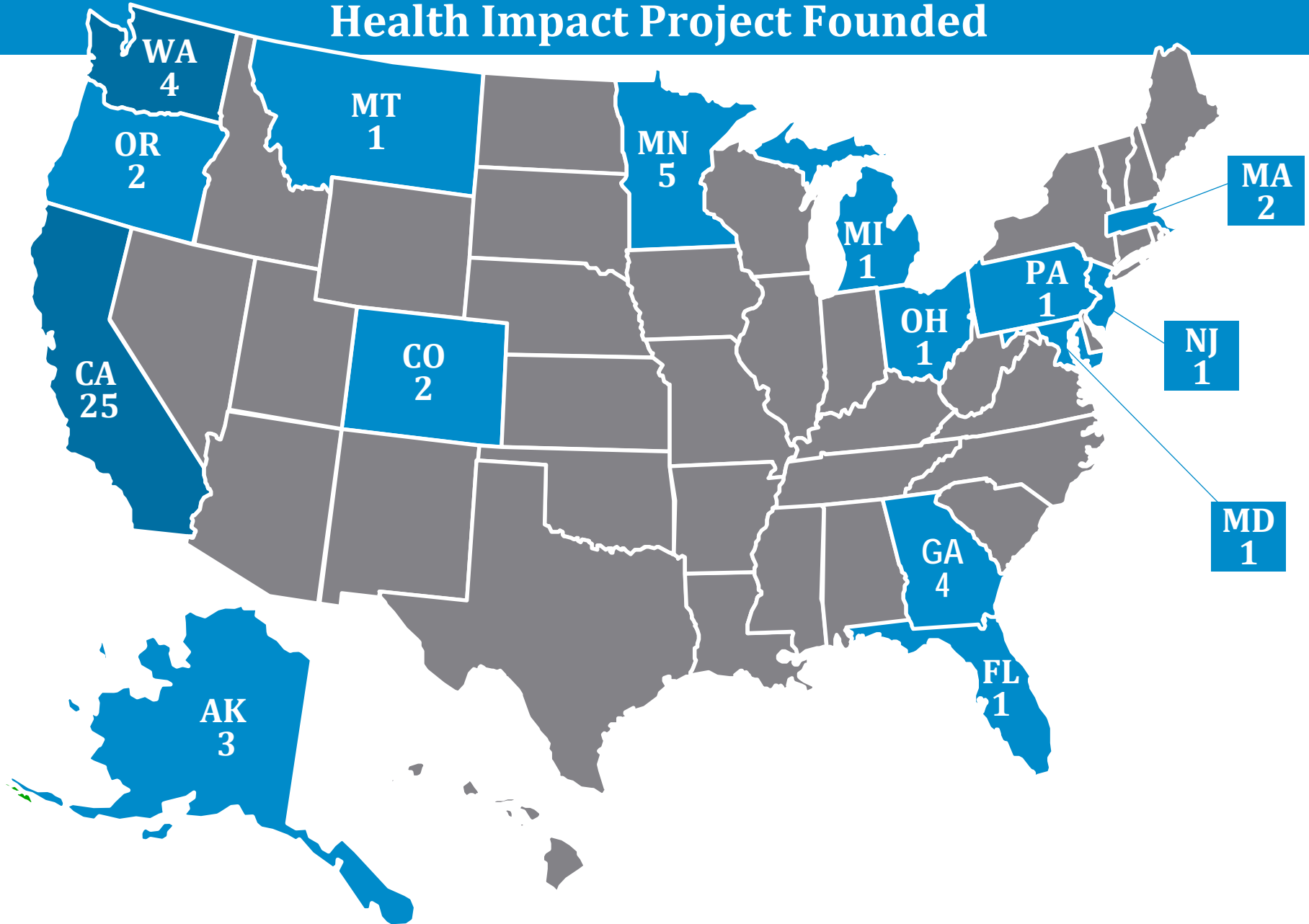
- **Predicts** health outcomes of a **specific proposed** decision/project
- Values collaboration with **stakeholders**
- Helps decision makers **weigh trade-offs** and understand the **health equity** implications of their work
- Relies on a **broad analytic framework** translating scientific data and community voice into **recommendations** for balanced, well-informed policies
- Focuses on solutions that **maximize positive** health impacts while **minimizing negative** ones

Completed HIAs, 2007 (N = 27)



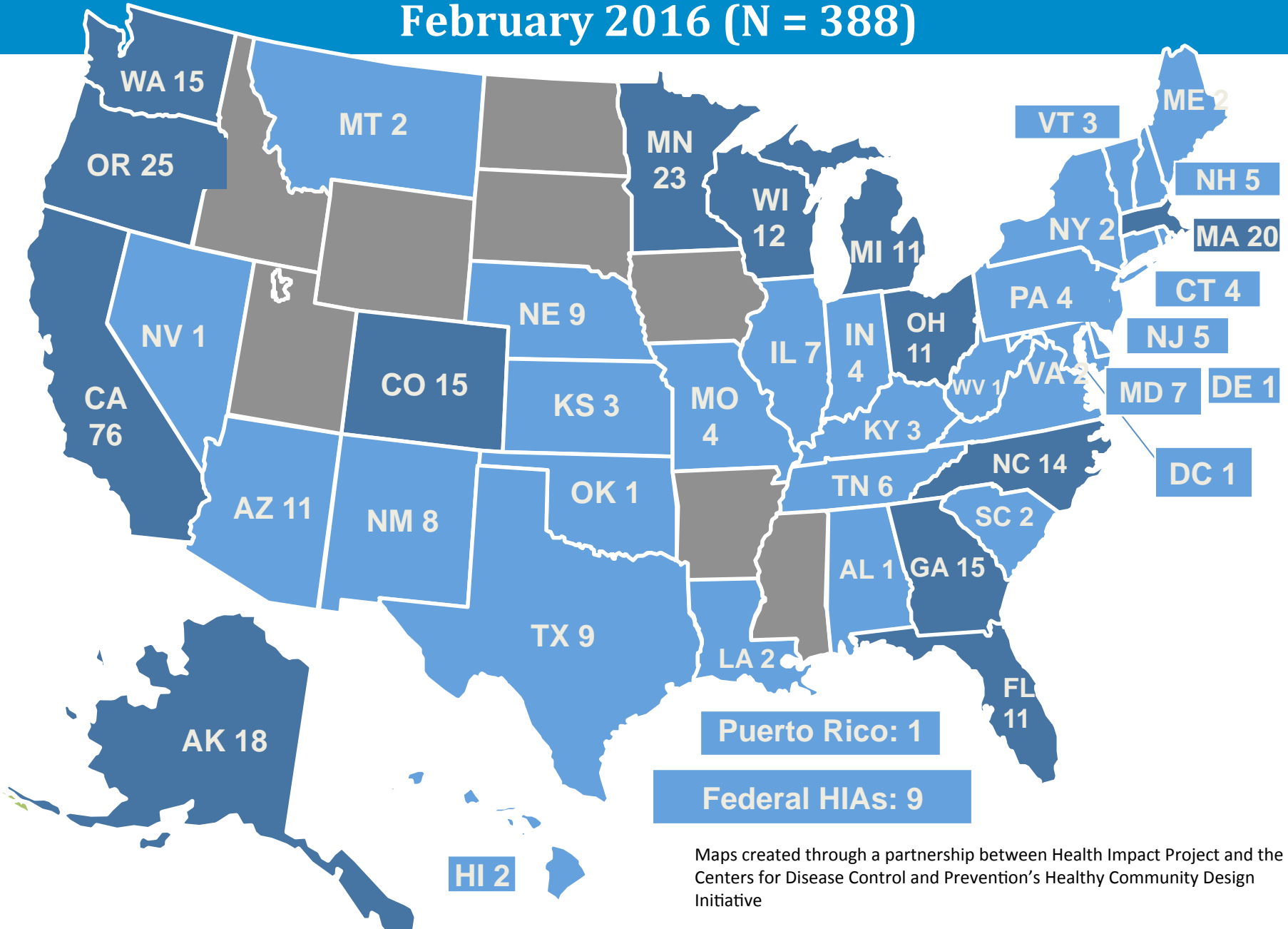
Completed HIAs, 2009 (N=54)

Health Impact Project Founded



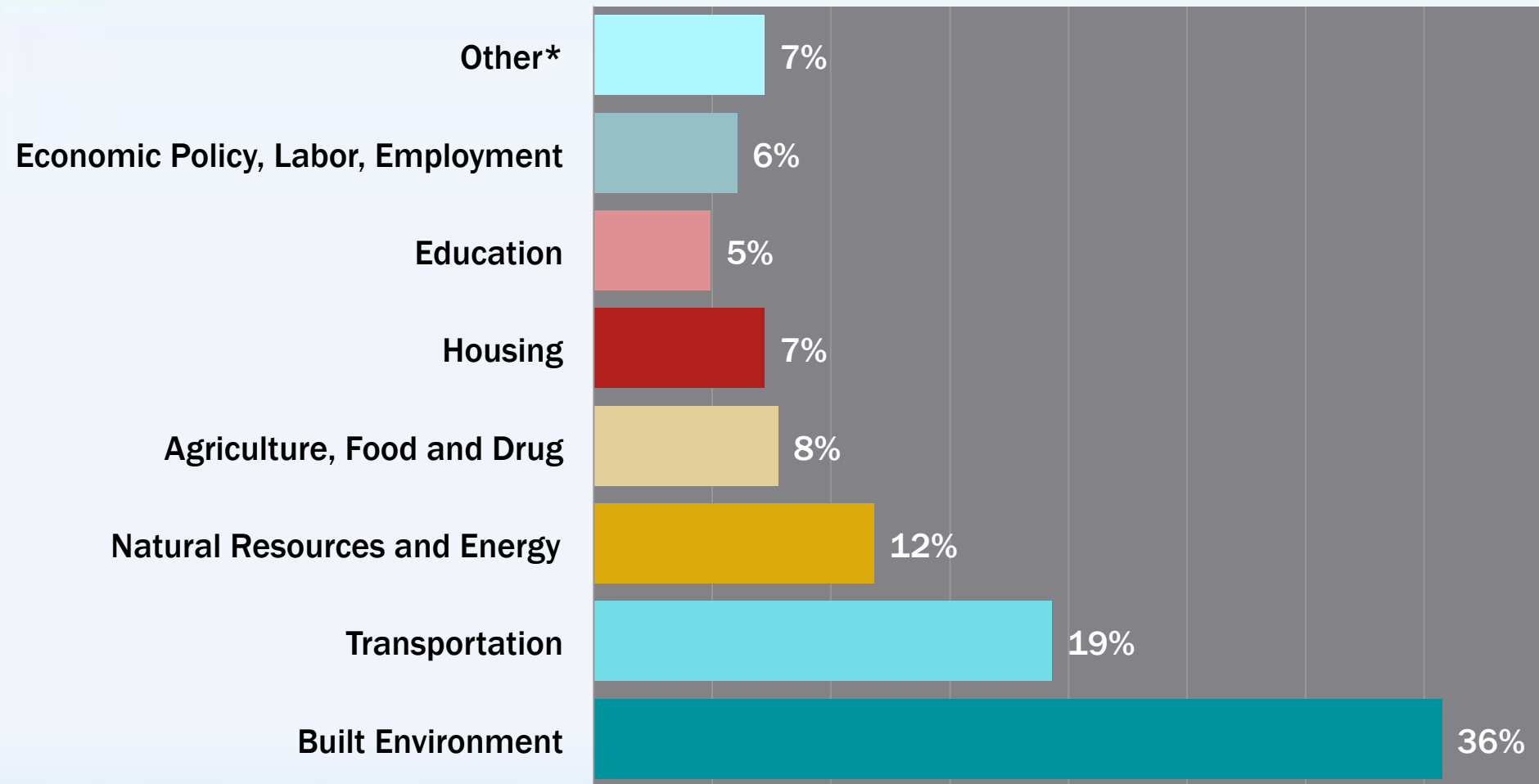
Completed and In Progress HIAs

February 2016 (N = 388)



Maps created through a partnership between Health Impact Project and the Centers for Disease Control and Prevention's Healthy Community Design Initiative

What sectors have HIAs addressed?



What types of decisions have HIAs informed?



Legislation



Implementation



Project Specific



(Comprehensive)
Planning

Steps of HIA



The Value of HIA: Policymaker Perspectives

The HIA has helped neutralize conflict by bringing different groups and disciplines together.

Janet Miller
Wichita city council member

The HIA revealed gaps in the data we needed to make good decisions.

Stacie McIntosh
U.S. Bureau of Land Management

HIA helps me win. It does all the work on the front end; nobody is angry, because all the concerns have been addressed.

Joe Cimperman
Cleveland City Councilmember

HIA is a tool to help us figure out where to ... use limited resources to benefit the greatest number of people.

Denise Provost
Massachusetts State Representative



Examples and Resources

HIA Examples

Topic	Location
Lower Duwamish Waterway Superfund Site	Washington
North Slope Oil Development	Alaska
Red Dog Mine	Alaska
Industrial Sand Mining	Wisconsin
Mojave Desert Utility-Scale Solar Project	California
Santo Domingo Pueblo Community Master Plan	New Mexico

Getting Involved in HIA

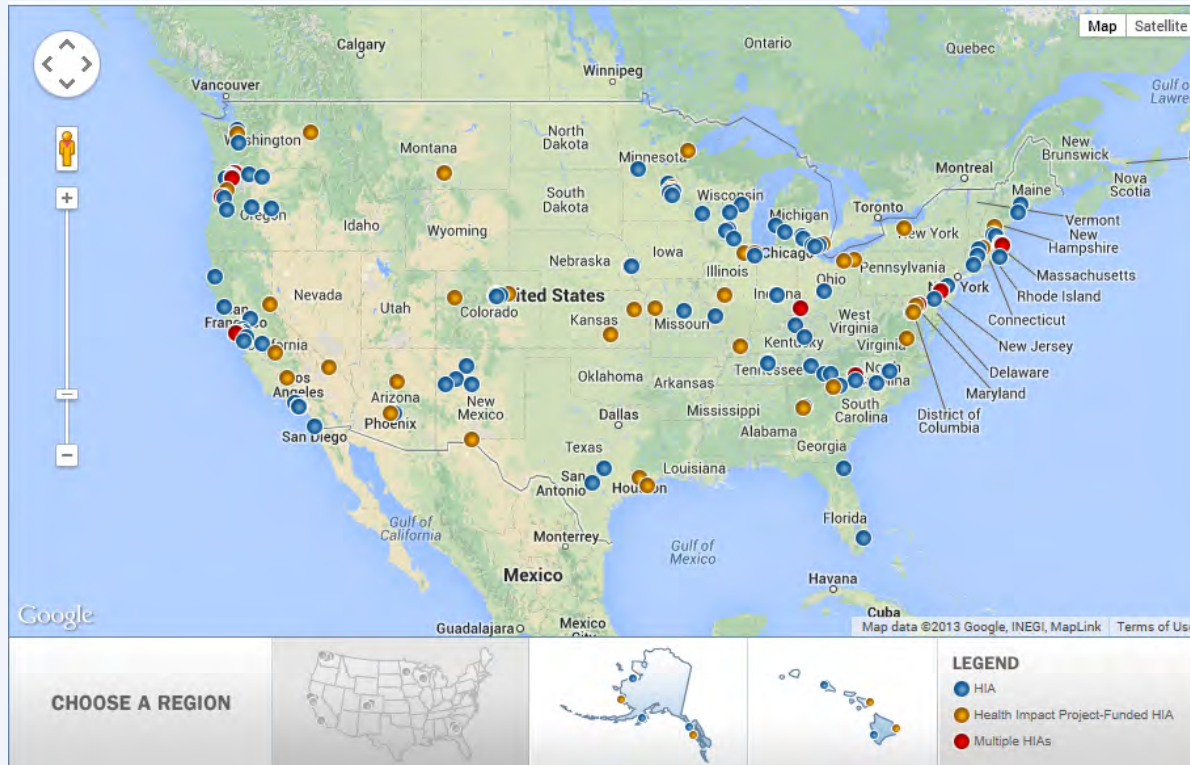
Potential roles for Tribal and Urban Indian Health Organizations and partners:

- **Initiate** and lead HIAs on issues of importance to your community
- **Collaborate** with partners to conduct assessments
- **Participate** on an HIA advisory committee
- **Contribute** to HIA stakeholder engagement efforts
- Use HIA findings to **advocate** for policy change

HIA and Public Health Accreditation

- **Opportunity to use documentation from HIA activities to achieve or maintain accreditation**
 - Data summaries
 - Documentation of stakeholder engagement
 - Dissemination activities
 - Recommendations for policy change to promote and protect health
- **HIA can contribute to, but not take the place of a community health assessment or improvement plan**

Health Impact Project Resources



www.healthimpactproject.org

Other Helpful HIA Resources

Society of Practitioners of Health Impact Assessment

<https://sophia.wildapricot.org/>



Centers for Disease Control and Prevention (CDC)

-Healthy Places <http://www.cdc.gov/healthyplaces/hia.htm>

-“phConnect”: HIA Community of Practice

www.phconnect.org



Human Impact Partners <http://www.humanimpact.org/>



Health Impact Assessment Clearinghouse Learning and Information Center (HIA-CLIC) <http://www.hiaguide.org>



World Health Organization (WHO) Health Impact Assessment <http://www.who.int/hia/en/>



Thank you!

Contact:

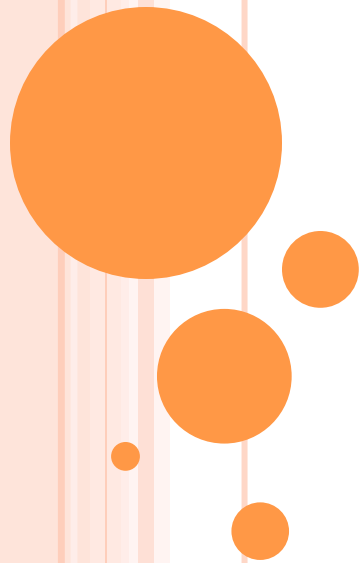
Amber Lenhart

amlenhart@pewtrusts.org

202-540-6729

www.healthimpactproject.org

CASE STUDIES





© Ron Niebrugge



© Ron Niebrugge

Mojave Desert Solar Energy and Tribal Communities A Health Impact Assessment Project

This project was conducted by the National Indian Justice Center pursuant to a grant from the Health Impact Project, a collaboration of the Robert Wood Johnson Foundation and The Pew Charitable Trusts.

National Indian Justice Center



- The National Indian Justice Center, Inc. (NIJC) is an Indian owned and operated non-profit corporation with principal offices in Santa Rosa, California. The National Indian Justice Center was established in 1983 through the collective efforts of the National American Indian Court Judges Association, the American Indian Lawyer Training Program, and the Bureau of Indian Affairs in order to establish an independent national resource for Native communities and tribal governments.
- The goals of NIJC are to design and deliver legal education, research, and technical assistance programs which seek to improve the quality of life for Native communities and the administration of justice in Indian country.
- <http://www.nijc.org/FtIrwinHIA.html>



The Mojave Desert Solar Energy HIA



- “As the single largest consumer of energy in the U.S., the Department of Defense (DoD) has embarked on an ambitious program of expanded renewable energy generation on military bases and in the field, with a goal of producing 25% of its energy from renewable sources by 2025.” The U.S. military goals include reaching net-zero energy consumption by 2030.
 - ▣ *(Renewable Energy for Military Installations: 2014 Industry Review, American Council on Renewable Energy (ACORE).)*
- The purpose of this Health Impact Assessment (HIA) was to evaluate the potential health impacts of the proposed Fort Irwin photo-voltaic (PV) array facility located in the Mojave Desert region of California while paying particular attention to the potential health impacts upon American Indian Tribes with homelands in the region.

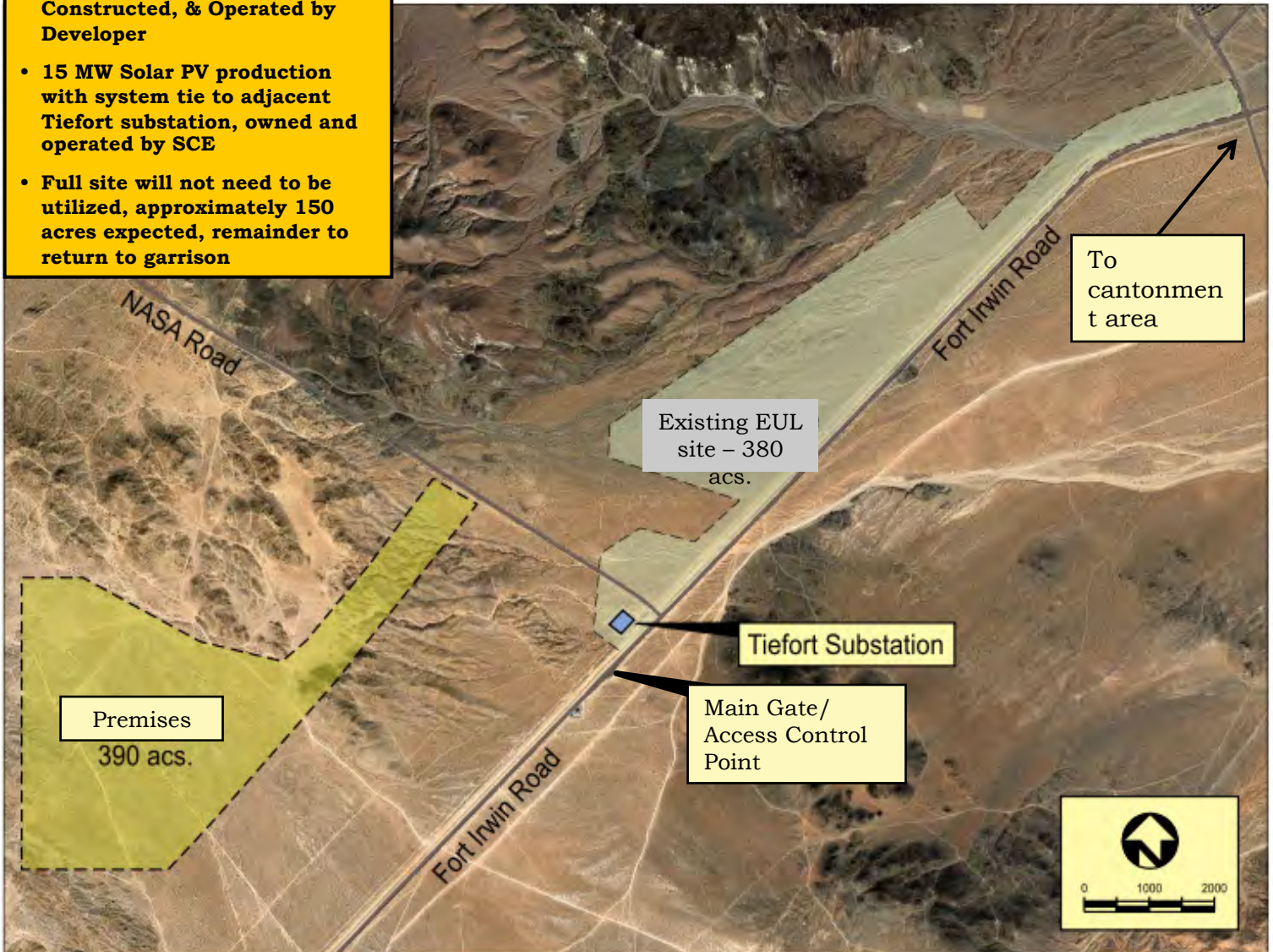
Ft. Irwin Solar Energy Project



- Ft. Irwin is part of the Army Energy Initiative's Task Force (EITF) to procure an up to 15 megawatt Photovoltaic Renewable Energy System.
- EITF is part of a coordinated effort by the military to reduce their energy costs and increase energy security by installing large-scale energy projects at Army installations
- These projects leverage private sector financing through power purchase agreements.
 - ▣ Private sector vendors will design, build and operate the installations and sell the energy back to the military

Fort Irwin Site Map

- Project Owned, Designed, Constructed, & Operated by Developer
- 15 MW Solar PV production with system tie to adjacent Tiefort substation, owned and operated by SCE
- Full site will not need to be utilized, approximately 150 acres expected, remainder to return to garrison



HIA Project Activities

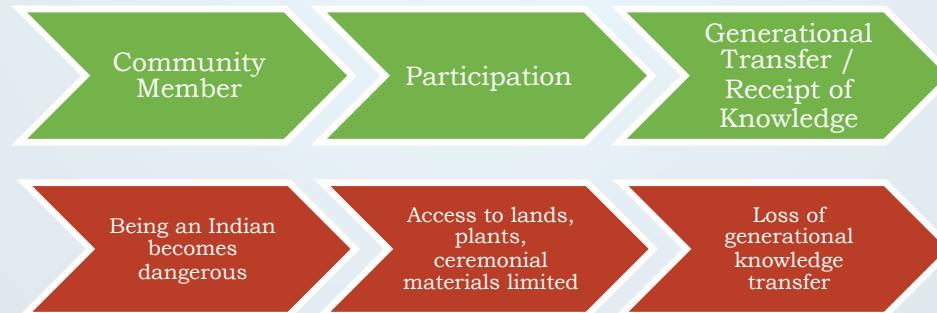


1. Formation of an HIA advisory committee.
2. HIA Training for project staff and stakeholders.
3. Determine HIA objectives with stakeholders.
4. Assess the health benefits and risks.
5. Analyze the assessment data, draft recommendations.
6. Circulate draft recommendations for comment.
7. Integrate comments into final recommendations and deliver to appropriate forums.
8. Monitor and evaluate the HIA project process and objectives.

The Challenges



- Identifying and engaging the stakeholders
- Identifying and gathering data for the health determinants for the tribal communities



Tips on working with Tribal Communities:

- Stakeholder(s) may represent the tribe, several tribes or a specific category of stakeholders.
- People may wear several hats!
- Your project may not be a top priority for the tribe.

Identifying the Stakeholders



© Ron Niebrugge

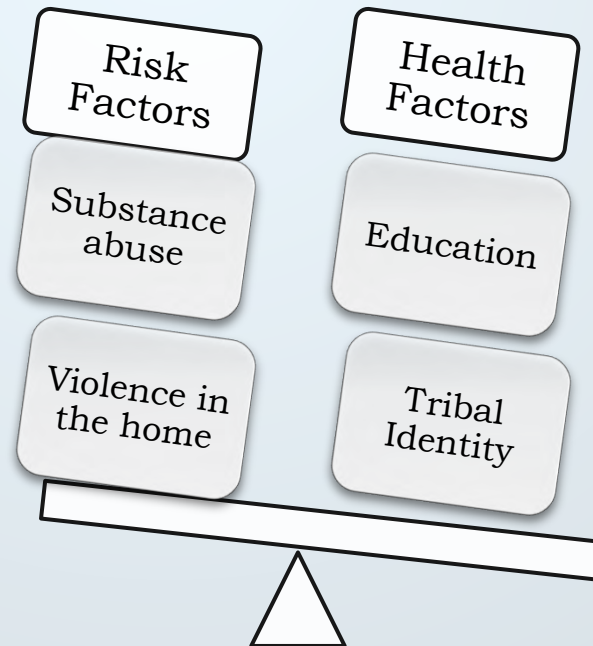


© Ron Niebrugge

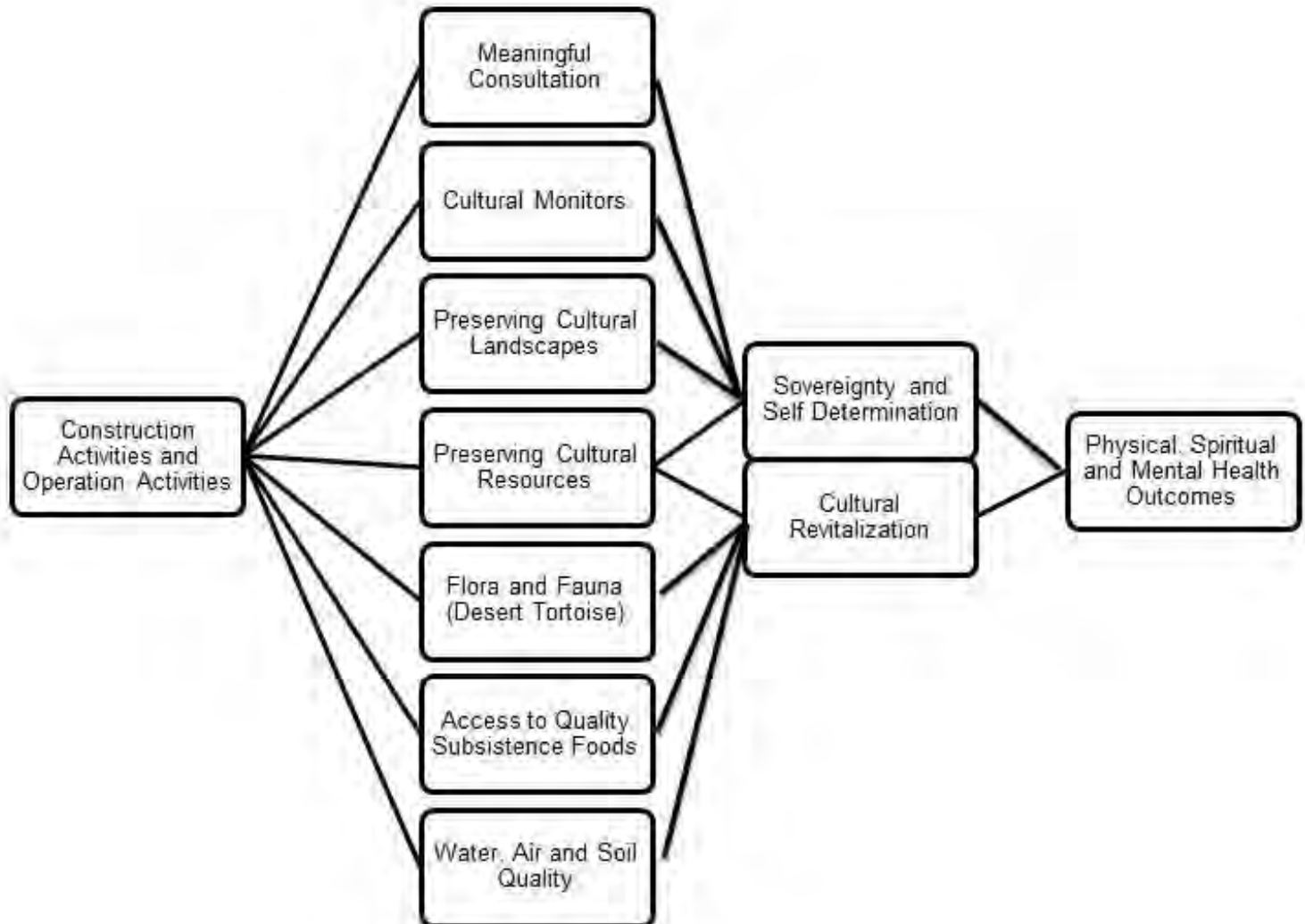


Tribal Health Determinants

- Cultural-natural resources and sacred sites/landscapes are significant health assets for California Native people for whom cultural identity is a primary health factor and buffer against health risks



HIA Scoping Diagram



Tribal Health Determinants



- In general, research on health determinants for tribal communities is often limited by the population sample size and time constraints; however tribal community members can identify health determinants.
- Health Determinants for tribal communities have not been significantly explored or discussed in relation to renewable energy project development in California.
- The HIA focused on the health value of the cultural-natural resources and sacred sites/landscapes that may be impacted by the renewable energy project.

HIA Health Determinants



Sovereignty and Self Determination

-Meaningful Consultation

Cultural Revitalization

-Preservation of Cultural Resources

Cultural Landscape

-Alteration of Cultural Landscape
 -Impacts upon Flora and Fauna (Native plants, Desert Tortoise)
 -Access to and quality of subsistence foods and cultural resources
 -Impacts on water, air and soil quality



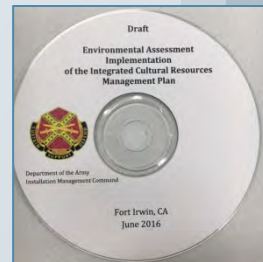
Photo Credits: DTRO/USFWS



The Successes



- Research on tribal health determinants
- Tool Kit for tribal community responding to environmental assessments
 - ▣ Giving a voice to tribes when consultation is not convened.
 - ▣ EA Public Comments submitted to Ft. Irwin
- Final HIA Report was submitted Pew Charitable Trusts
- Voltaic Facility Project removed from Ft. Irwin project page
- June 2016 – Ft. Irwin has developed EA Implementation of their Integrated Cultural Resources Management Plan




HIA Project Website



© Ron Niebrugge



© Ron Niebrugge




National Indian Justice Center

The Pioneer in Providing Services and Training for Tribal Personnel


- > HOME
- > ABOUT US
- > T/TA SERVICES
- > TRAINING SCHEDULE
- > TTAP

Songs of Our People



- > PROJECTS / SURVEYS
- > RESOURCES
- > PUBLICATIONS
- > MAILING LIST
- > CONTACT US

For All My Relations



Annual Conference

What is a Health Impact Assessment?

Ft. Irwin HIA Project with respect to Tribal Communities

HIA Resources

HIA Partners

HIA Project E-Mail List

What is a Health Impact Assessment?

A Health Impact Assessment (HIA) is a systematic process that uses an array of data sources and analytic methods and considers input from stakeholders to determine the potential effects of a proposed policy, plan, program, or project on the health of a population and the distribution of the effects within the population. HIA provides recommendations on monitoring and managing those effects.

A health impact assessment is a process to help achieve effective public policy solutions by doing three things:

- Provide information about a plan, project, or policy proposal's expected impact on the health of affected areas.
- Invite stakeholders to express how they expect the proposal to affect health.
- Invite stakeholders to make a plan to address any potential consequences to health.

Health impact assessments aim to ensure that:

- Stakeholders are invited into the decision making process to help collaborate on plans, projects, and policies that are better for everyone.
- Unintended consequences of the proposal are examined before they are adopted.
- Proposals are improved by helping stakeholders make plans for how to address any unintended consequences.

A health impact assessment gives decision makers information about the potential health benefits and consequences of a proposal to help maximize benefits and minimize risks.

HIA Steps	Description
Screening	Screening — Establishes the need for and value of conducting an HIA. Is it feasible? Can an HIA be done within the timeframe of the decision? Are the decision makers open to HIA? Is there public concern regarding the health benefits of the proposal? These are all factors to consider when determining whether to conduct an HIA.
Scoping	Scoping — Helps identify the affected populations and narrows the scope of health effects to be evaluated to those of greatest potential importance. During this stage, project staff members determine a list of research questions and identify the data and methods to help answer those questions.
Assessment	Assessment — Describes the baseline health conditions of the affected populations and characterizes the expected health effects of the proposal, as well as alternatives under

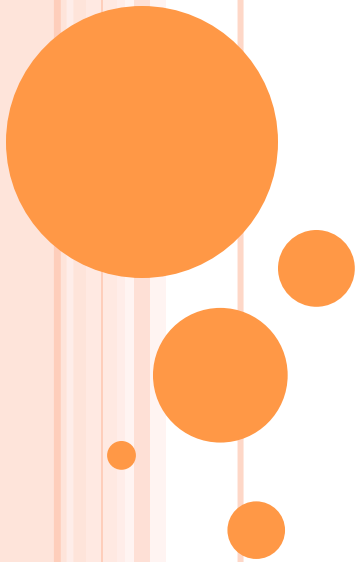
Thank you!



- Questions?

- Contact Information:
 - ✦ Raquelle Myers, Staff Attorney
 - ✦ National Indian Justice Center
 - ✦ nijc@aol.com
 - ✦ <http://www.nijc.org/FtIrwinHIA.html>

INTERACTIVE EXERCISE



Screening for HIA

Brief Description: EPA plan to clean up the LDW Superfund Site

Likely health effects:

- Active cleanup activities
- Lingering contamination
- Residents, fishers, and tribes

Would the HIA add value?

- Human health not part of EIS
- Traditional and cultural significance of fishing

Opportunity to inform decision making?

- Public comment period

Decision makers: EPA and responsible parties

Are resources available? Yes!

